



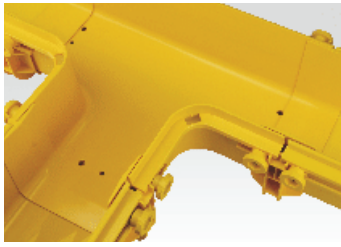
# Fiber Duct

**EUROLAN**  
— CONNECT IT —

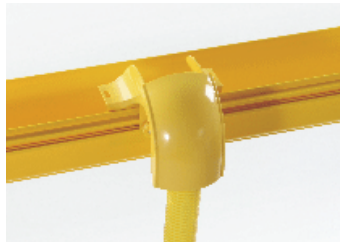
[www.eurolan.se](http://www.eurolan.se) - [info@eurolan.se](mailto:info@eurolan.se)

# EUROLAN FIBER DUCTS

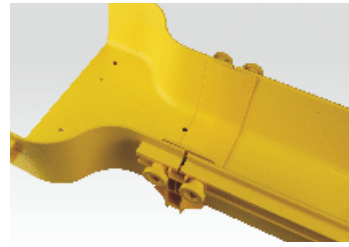
## Application Samples



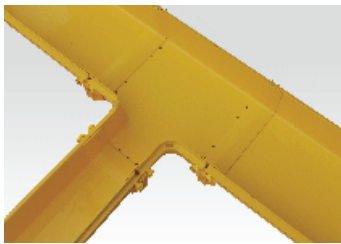
**Horizontal T Bend**



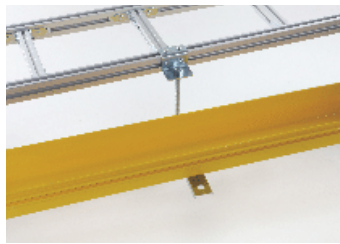
**Exit Kit - Pipe Type**



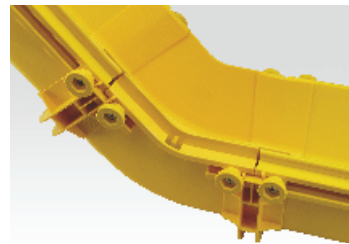
**Reducer**



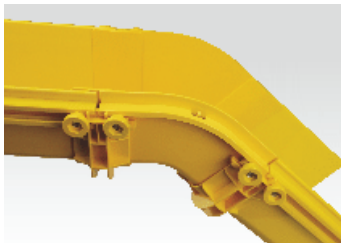
**Horizontal T (240 to 120)**



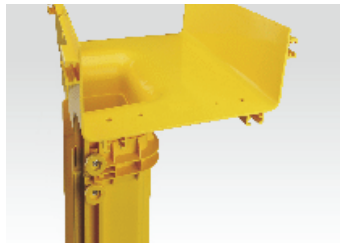
**Hanging Set**



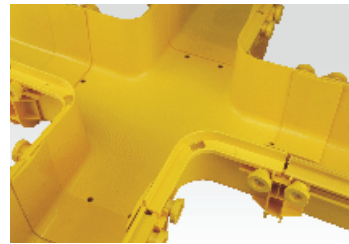
**45° Vertical Up**



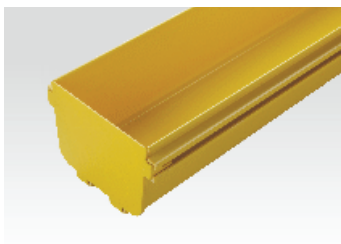
**45° Vertical Down**



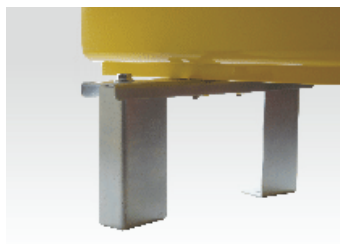
**Vertical T (240 to 120)**



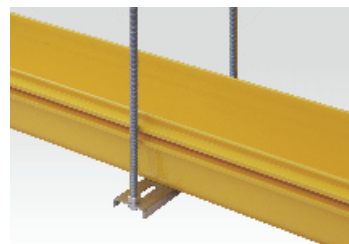
**Horizontal Cross**



**End Cap**



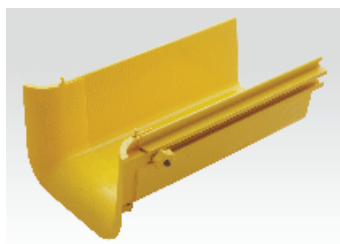
**Cabinet Top Stand**



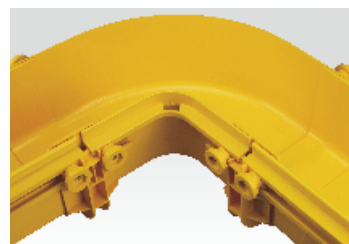
**Duct Hanging Set**



**Exit Kit - Duct Type**



**Trumpet Exit**



**90° Horizontal Bend**



# EUROLAN FIBER DUCTS

**EUROLAN Fiber Ducts**, specially used in Datacenter and Telecommunication applications, where duct system is designed to protect and route fiber optic patch cords, cable assemblies to and from fiber guide closures, ODF and other terminal devices. Protecting cables from external physical effects and electrical interferences, thus provides a better operational structure.

**EUROLAN Fiber Ducts** main parts are made of PVC and all rest accessories (brackets, corners, T bends, connections, exit parts..etc) are made of ABS Acrylonitrile Butadiene Styrene)

All size of Fiber Ducts as W120, W240 and W300mm are comply with **IEC EN 61537:2007** - Cable management. Cable tray systems and cable ladder systems and **IEC EN 62321-5:2013** Determination of certain substances in electrotechnical products. Cadmium, lead and chromium in polymers and electronics and cadmium and lead in metals by AAS, AFS, ICP-OES and ICP-MS which is so called RoHS Restriction of Hazardous Substances, based on proper conformity testings products are in accordance with CE regulations.

## Temperature Resistance,

**EUROLAN Fiber Ducts** are tested under -40°C and 16 hours long for temperature resistance tests, no any cracks, hardening is observed. At 60°C under 20N surface pressure test d:0,85mm surface deformation happened, while the standard consider more than d:2,0mm surface deformation as a failing criteria

## Fire Resistance,

**EUROLAN Fiber Ducts** placed open fire at 10 minutes, than in 2 minutes the fire stops, do not move forward and no dripping happened. Standard in this test accepts to have fire stopped in 30 minutes, and no dripping as an acceptance criteria.

## Electrical Isolation,

**EUROLAN Fiber Ducts** have given result of more than 100 kΩ isolation performance, under test conditions of %93 humidity, 40°C temperature, 48 hours long. As well for high voltage tests resists to 42kV voltage 60seconds- have not observed any deformation or holes on the ducts. Standard acceptance criteria is more than 5 kΩ and 42 kV voltage for 60 seconds.



# EUROLAN FIBER DUCTS

## W120 mm Fiber Duct

**EL-FD120-200**  
W1200mm H100mm Fiber  
Duct, L2000mm



**EL-FD120-200-CVR**  
W120mm Fiber Duct  
Cover, L2000mm



**EL-FD120-ELB90**  
W120mm Fiber Duct,  
90° Horizontal Bend



**EL-FD120-ELB90-CVR**  
W120mm Fiber Duct,  
90° Horizontal Bend Cover



**EL-FD120-T**  
W120mm Fiber Duct,  
Horizontal T



**EL-FD120-T-CVR**  
W120mm Fiber Duct,  
Horizontal T Cover



**EL-FD120-CRS**  
W120mm Fiber Duct,  
Horizontal Cross



**EL-FD120-CRS-CVR**  
W120mm Fiber Duct,  
Horizontal Cross Cover



**EL-FD120-VD45**  
W120mm Fiber Duct,  
45° Vertical Down Bend  
(Outside)



**EL-FD120-VD45-CVR**  
W120mm Fiber Duct,  
45° Vertical Down  
Bend Cover (Outside)



**EL-FD120-VU45**  
W120mm Fiber Duct,  
45° Vertical Up Bend  
(Inside)



**EL-FD120-VU45-CVR**  
W120mm Fiber Duct,  
45° Vertical Up Bend  
Cover (Inside)



**EL-FD120-CNT**  
W120mm Fiber Duct,  
Connector



**EL-FD120-END**  
W120mm Fiber Duct,  
End Cap



# EUROLAN FIBER DUCTS

## W120 mm Fiber Duct

**EL-FD120-VT**  
W120mm Fiber Duct,  
Vertical T Exit



**EL-FD120-VT-CVR**  
W120mm Fiber Duct,  
Vertical T Exit Cover



**EL-FD120-TRP**  
W120mm Fiber Duct,  
Trupmet



**EL-FD120-HNG-SET**  
W120mm Fiber Duct,  
Hanging Set



**EL-FD120-BAR**  
W120mm Fiber Duct,  
Brace



**EL-FD120-CTS**  
W120mm Fiber Duct,  
Cabinet Top Stand



**EL-FD-OUT-PT**  
Fiber Duct, Movable  
Exit Kit Pipe Type



**EL-FD-OUT-DT**  
Fiber Duct, Movable  
Exit Kit 120mm  
Duct Type



**EL-FD-ROD-2M**  
Fiber Duct Ø14 mm  
Rod (L2000mm)



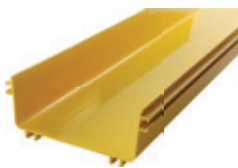
**EL-FD-NUT**  
Fiber Duct  
Screw&Nut (1 pc)



# EUROLAN FIBER DUCTS

## W240 mm Fiber Duct

**EL-FD240-200**  
W240mm H100mm  
Fiber Duct, L2000mm



**EL-FD240-200-CVR**  
W240mm Fiber Duct  
Cover, L2000mm



**EL-FD240-ELB90**  
W240mm Fiber Duct,  
90° Horizontal Bend



**EL-FD240-ELB90-CVR**  
W240mm Fiber Duct,  
90° Horizontal Bend Cover



**EL-FD240-T**  
W240mm Fiber Duct,  
Horizontal T



**EL-FD240-T-CVR**  
W240mm Fiber Duct,  
Horizontal T Cover



**EL-FD240-CRS**  
W240mm Fiber Duct,  
Horizontal Cross



**EL-FD240-CRS-CVR**  
W240mm Fiber Duct,  
Horizontal Cross Cover



**EL-FD240-VD45**  
W240mm Fiber Duct,  
45° Vertical Down  
Bend (Outside)



**EL-FD240-VD45-CVR**  
W240mm Fiber Duct,  
45° Vertical Down Bend  
Cover (Outside)



**EL-FD240-VU45**  
W240mm Fiber Duct,  
45° Vertical Up  
Bend (Inside)



**EL-FD240-VU45-CVR**  
W240mm Fiber Duct,  
45° Vertical Up  
Bend Cover (Inside)



**EL-FD240-CNT**  
W240mm Fiber Duct,  
Connector



**EL-FD240-END**  
W240mm Fiber Duct,  
End Cap

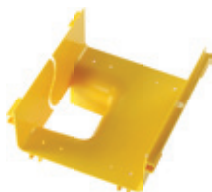




# EUROLAN FIBER DUCTS

## W240 mm Fiber Duct

**EL-FD240-VT**  
W240mm Fiber Duct,  
Vertical T Exit



**EL-FD240-VT-CVR**  
W240mm Fiber Duct,  
Vertical T Exit Cover



**EL-FD240-HTC120**  
W240mm Fiber Duct,  
120mm Horizontal T



**EL-FD240-HTC120-CVR**  
W240mm Fiber Duct,  
120mm Horizontal T Cov



**EL-FD240-RDC120**  
W240mm Fiber Duct,  
Reducer to 120mm



**EL-FD240-RDC120-CVR**  
W240mm Fiber Duct,  
Reducer Cover to 120mm



**EL-FD240-HGS-SET**  
W240mm Fiber Duct,  
Hanging Set



**EL-FD240-BAR**  
W240mm Fiber Duct,  
Brace



**EL-FD240-CTS**  
W240mm Fiber Duct,  
Cabinet Top Stand



**EL-FD-OUT-PT**  
iber Duct, Movable  
Exit Kit Pipe Type



**EL-FD-OUT-DT**  
Fiber Duct, Movable  
Exit Kit 120mm  
Duct Type



**EL-FD-ROD-2M**  
Fiber Duct Ø14 mm  
Rod (L2000mm)



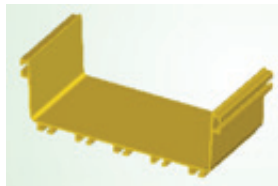
**EL-FD-NUT**  
Fiber Duct Screw&Nut (1 pc)



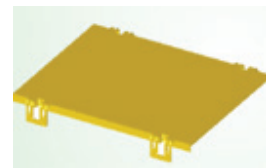
# EUROLAN FIBER DUCTS

## W300 mm Fiber Duct

**EL-FD300-200**  
W300mm H100mm  
Fiber Duct, L2000mm



**EL-FD300-400-CVR**  
W300mm Fiber Duct  
Cover, L2000mm  
(5 pcs 40 cm)



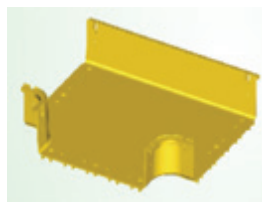
**EL-FD300-ELB90**  
W300mm Fiber Duct,  
90° Horizontal Bend



**EL-FD300-ELB90-CVR**  
W300mm Fiber Duct,  
90° Horizontal  
Bend Cover



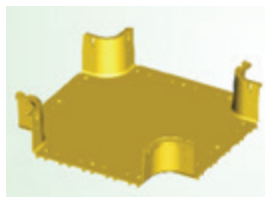
**EL-FD300-T**  
W300mm Fiber Duct,  
Horizontal T



**EL-FD300-T-CVR**  
W300mm Fiber Duct,  
Horizontal T Cover



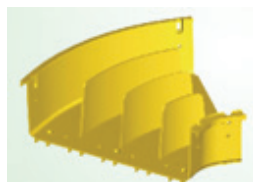
**EL-FD300-CRS**  
W300mm Fiber Duct,  
Horizontal Cross



**EL-FD0-CRS-CVR**  
W300mm Fiber Duct,  
Horizontal Cross Cover



**EL-FD300-ELB45**  
W300mm Fiber Duct,  
45° Horizontal Bend



**EL-FD300-ELB45-CVR**  
W300mm Fiber Duct,  
45° Horizontal Bend Cover



**EL-FD300-VD90**  
W300mm Fiber Duct,  
90° Vertical Daown Bend



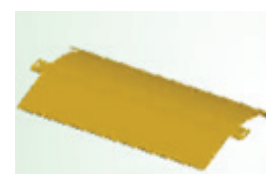
**EL-FD300-VD90-CVR**  
W300mm Fiber Duct,  
90° Vertical Down  
Bend Cover



**EL-FD300-VD45**  
W300mm Fiber Duct,  
45° Vertical Down  
Bend (Outside)



**EL-FD300-VD45-CVR**  
W300mm Fiber Duct,  
45° Vertical Down  
Bend Cover (Outside)

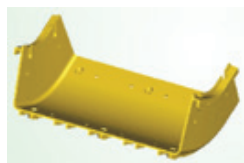




# EUROLAN FIBER DUCT

## W300 mm Fiber Duct

**EL-FD300-VU45**  
W300mm Fiber Duct,  
45° Vertical Up Bend  
(Inside)



**EL-FD300-VU45-CVR**  
W300mm Fiber Duct,  
45° Vertical Up  
Bend Cover (Inside)



**EL-FD300-CNT**  
W300mm Fiber Duct,  
Connector



**EL-FD300-END**  
W300mm Fiber Duct,  
End Cap



**EL-FD300-OUT**  
W300mm Fiber Duct,  
Movable Exit Kit



**EL-FD300-LBAR**  
W300mm Fiber Duct,  
L Type Bracket



**EL-FD300-ROD**  
W300mm Fiber Duct,  
Rod



**EL-FD-ROD-2M**  
Fiber Duct Ø14 mm  
Rod (L2000mm)



**EL-FD-NUT**  
Fiber Duct  
Screw&Nut (1 pc)



# EUROLAN FIBER DUCT

## References - Applications





# EUROLAN FIBER DUCT

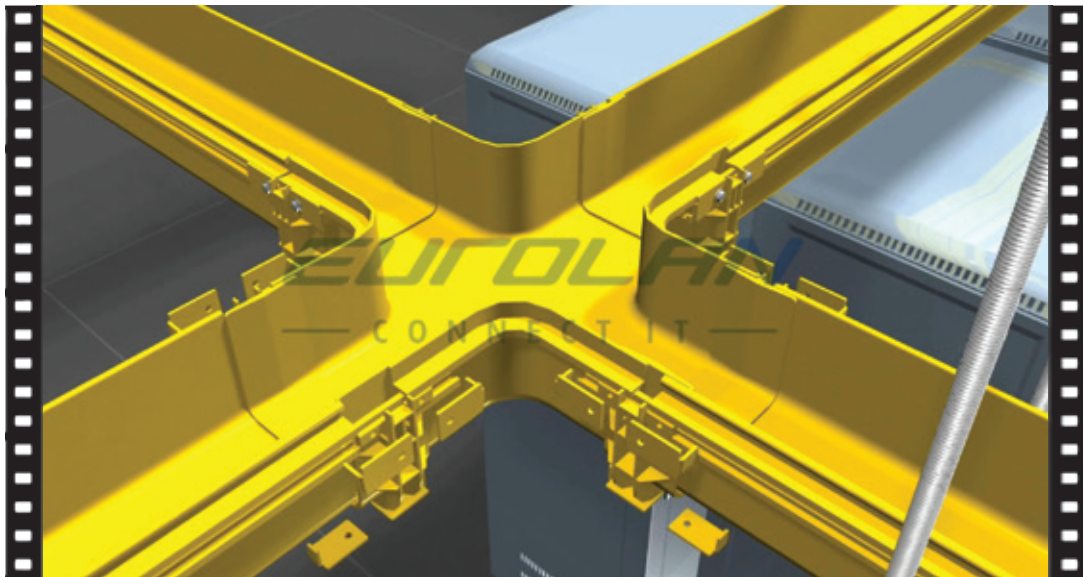
## Application Samples - Video



**EUROLAN**  
— CONNECT IT —

**Eurolan Video for Fiber Duct**

VIDEO



<https://youtu.be/DLIo6Wrlnz8>



**EUROLAN**  
— CONNECT IT —





## HEADQUARTER STOCKHOLM / SWEDEN

Solutions Eurolan Europé AB  
Phone +46 8 410 479 80  
[info@eurolan.se](mailto:info@eurolan.se)

Johannesfredsvägen 12  
SE-168 69 Bromma  
Sweden

[www.eurolan.se](http://www.eurolan.se) - [info@eurolan.se](mailto:info@eurolan.se)