



data center network  
infrastructure





## COPPER CAT 6<sub>A</sub>, 7, 7<sub>A</sub>, 8



Cables Category 6<sub>A</sub>, 7, 7<sub>A</sub>, 8.2



Copper Connectors Category 6<sub>A</sub>, 8.1



Angled Panels

## PRE-TERMINATED COPPER SOLUTIONS



Cable Assemblies



Cassettes



Cassette Panels

## FIBER OPTIC



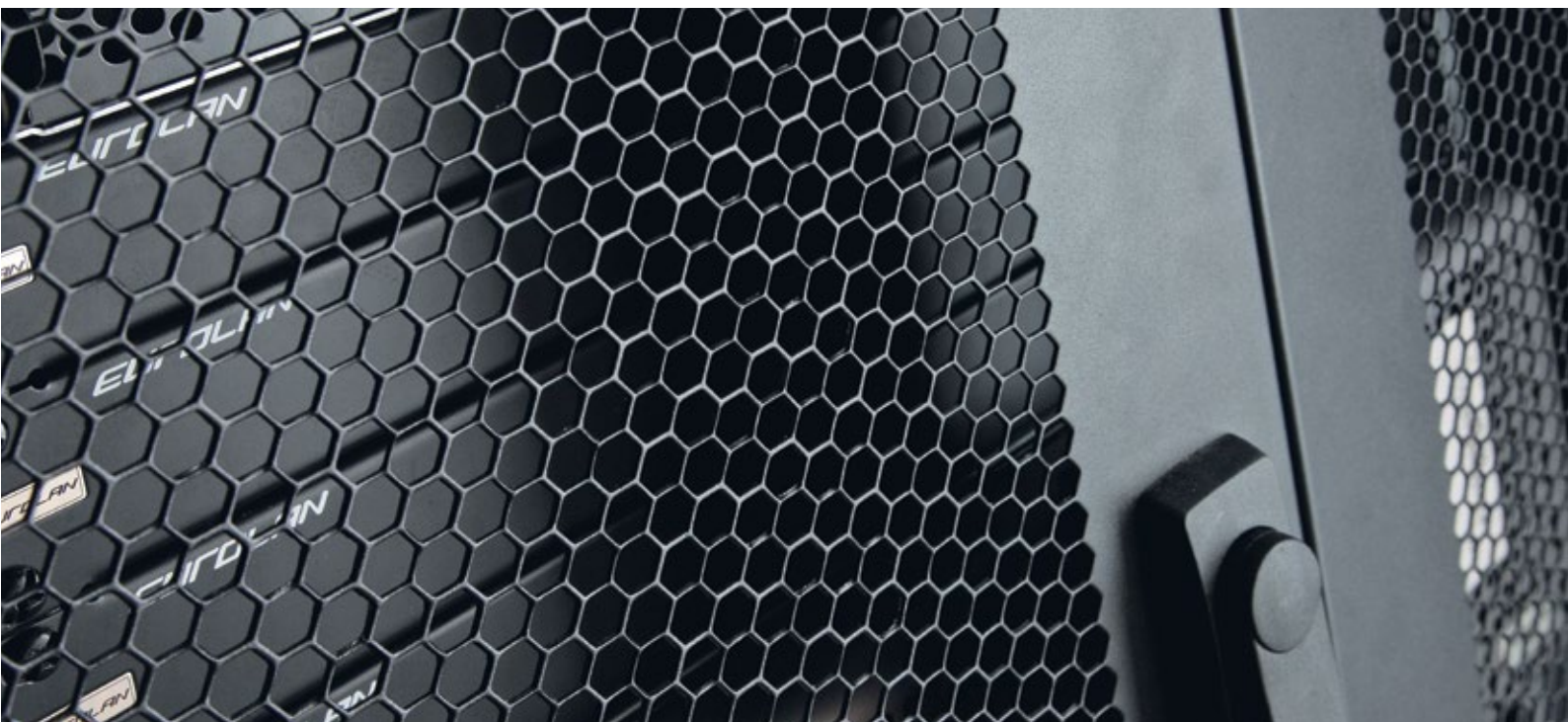
MTP/MPO Systems



Fiber Panels



Q-Link Pre-Terminated  
Fiber System



## CABINETS, RACKS, PDU



Server cabinets  
Rackcenter D9000



Open Racks Racknet R300



PDU



Cable Management



ATS

## CABLE TRAYS Q-LINK



Trays 120, 240, 300 mm



Accessories





## COPPER SYSTEMS CATEGORIES 6A, 7, 7A, 8.1, 8.2

Copper solutions for data centers provide a high level of performance and reliability and are easily scaled to move to speeds of up to 40 Gb / s. Ideal for deploying all types of mission-critical applications and are able to support power over Ethernet (PoE) up to 100 watts.

Copper solutions of classes I and II (category 8) in accordance with the standards ISO / IEC 11801 and ANSI / TIA-568-C.2-1 are designed for use in perspective information systems. The main area of application is cabling for data centers supporting applications of 25GBASE-T and 40GBASE-T. The length of the channel is 30 m.

Copper solutions include: cables categories 6A, 7, 7A, 8.2, Keystone modules categories 6A, 8.1, patch panels, cassettes, cords.

### SPEED

Copper solutions support data rates of 10, 25, 40 Gb / s.

# PRE-TERMINATED COPPER SOLUTIONS

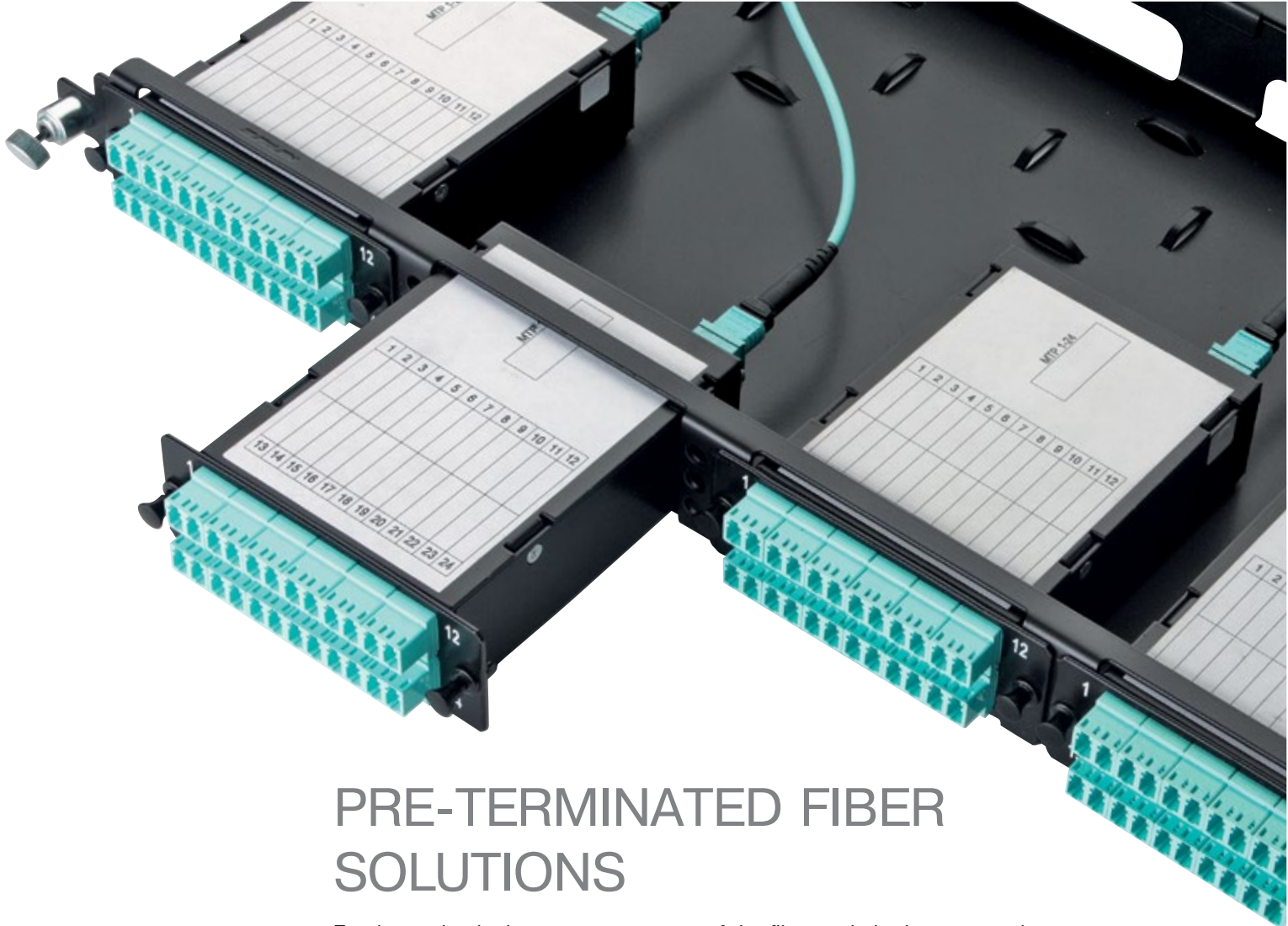


Pre-terminated trunks are designed to ensure the highest levels of performance, reliability, and longevity whether supporting mission-critical, large enterprise, or small business applications. This feature allows you to maximize the speed of the installation process. Can be used to deploy high-density port systems, such as data centers, in a short time. Components include: cassette and cable assemblies, cassette panels, cords.

## SPEED

With factory testing and no need for field terminations, you can reduce installation time by up to 70 percent.





## PRE-TERMINATED FIBER SOLUTIONS

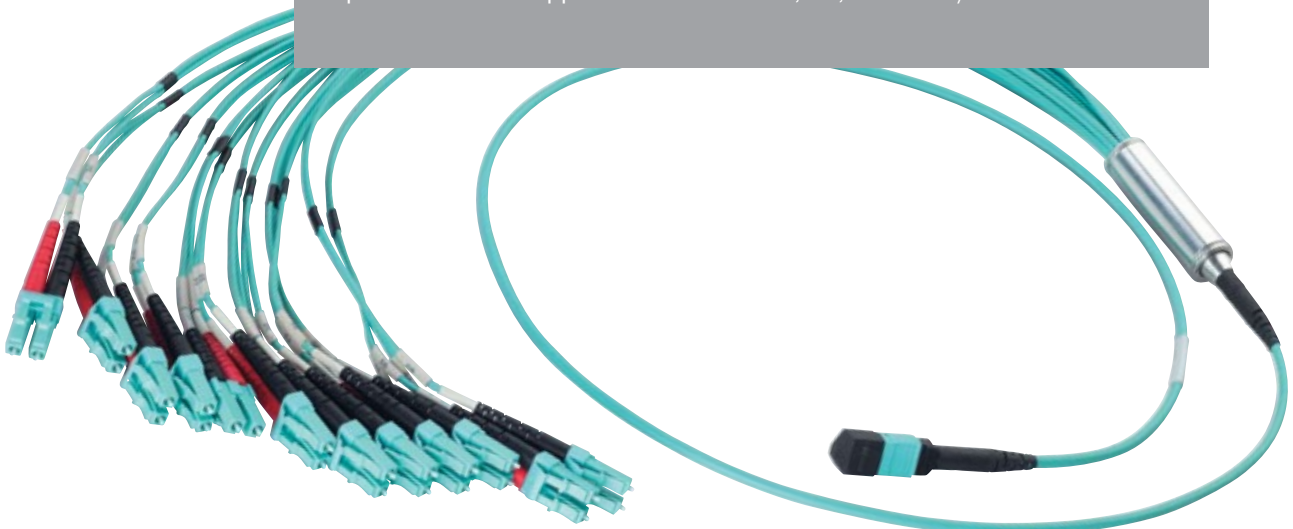
Eurolan technologies cover every area of the fiber optic in data center that allows us to create cabling, designed for speeds of 40 and 100 Gb/s with the possibility of increasing it up to 400 Gb/s.

High-density enclosures are an easy-to-connect, high-density solutions for enterprise and data center applications, where fast deployment and simple maintenance are critical. Enclosures can be custom configured with cassettes, adapter plates and pre-terminated solutions.

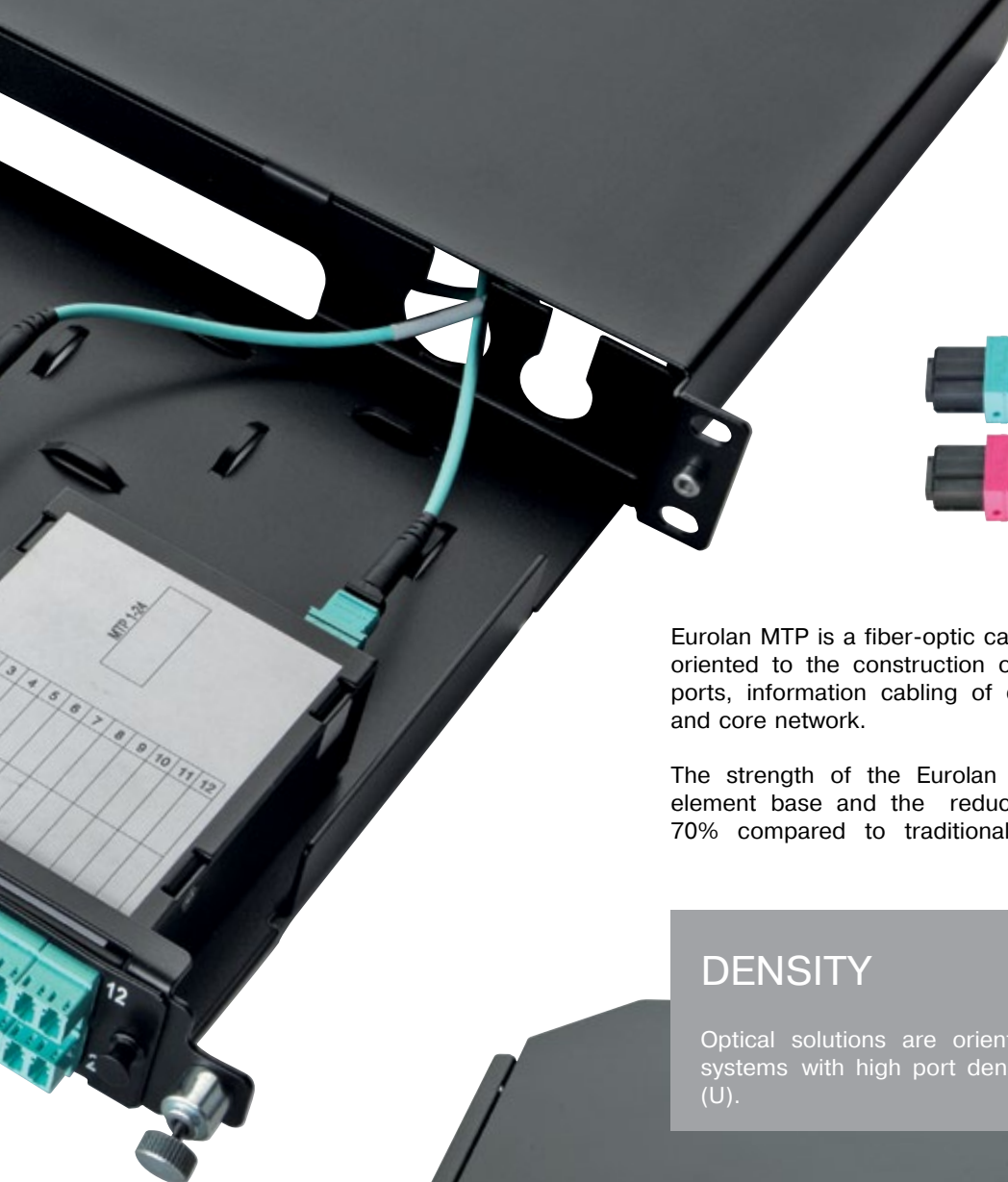
Pre-terminated single-mode and OM3, OM4, OM5 multi-mode trunk assemblies and harnesses are made to customer specifications.

## PERFORMANCE

Optical solutions support data rates of 10, 40, 100 Gbit / s.







Eurolan MTP is a fiber-optic cable system based on MTP connectors, oriented to the construction of cable systems with high density of ports, information cabling of data center, large corporate systems and core network.

The strength of the Eurolan approach is the high quality of the element base and the reduction in line deployment time by 70% compared to traditional technology.

## DENSITY

Optical solutions are oriented to the construction of cable systems with high port density. Up to 144 LC ports in 1 unit (U).



# SERVER CABINETS D9000

Cabinets for installing servers, switches, panels and other 19" equipment in server rooms and data centers.

Widths 600 and 750 mm as well as depths of 1000 and 1200 mm makes it possible to fill a specific project the topology of the hardware room, switches, server equipment and storage drives.

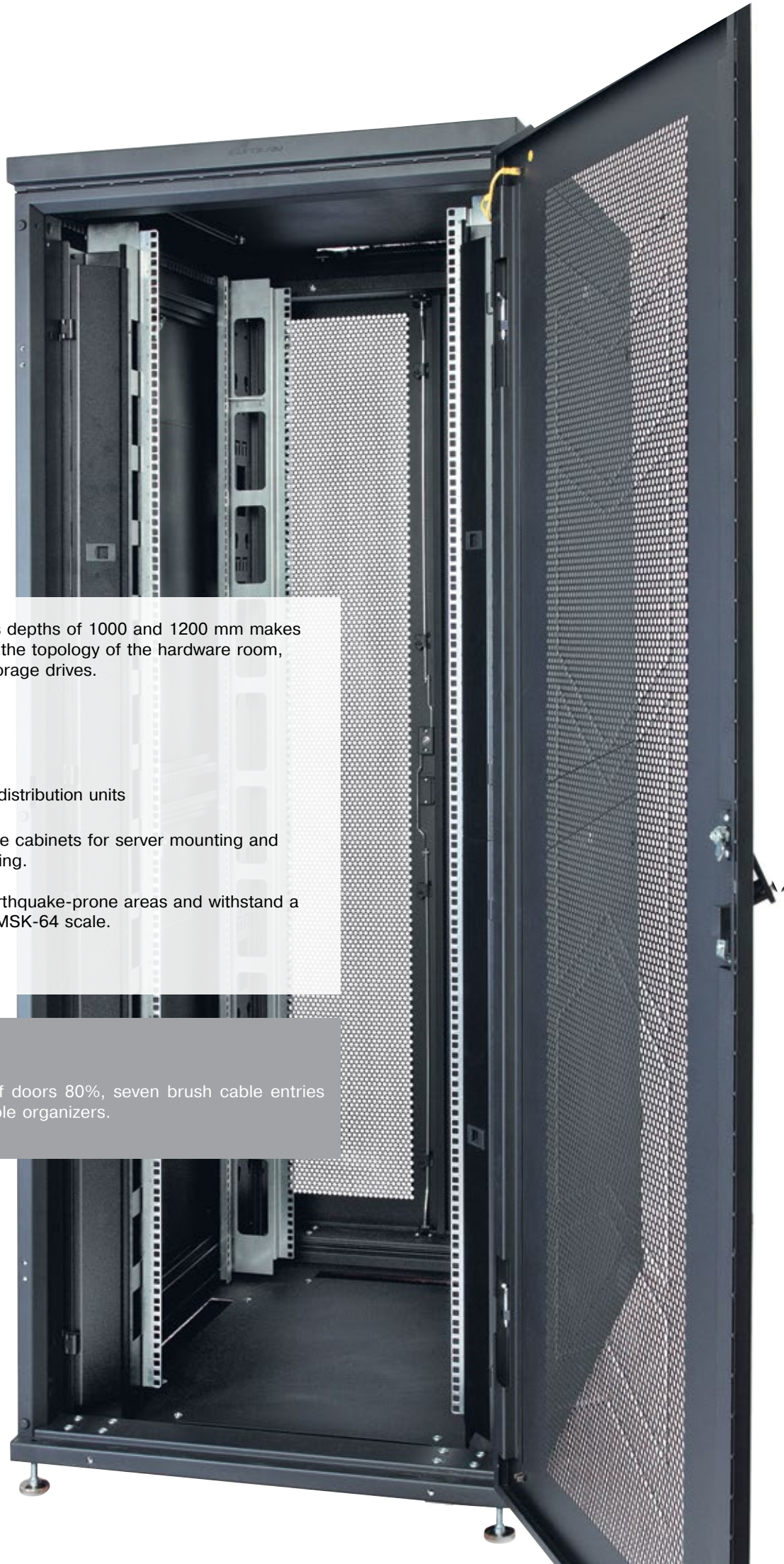
- Height: 42, 47 U
- Welded frame
- Zero-U trays for installing power distribution units

We recommend using 600 mm wide cabinets for server mounting and 750-mm for use switches and cabling.

D9000 cabinets can be used in earthquake-prone areas and withstand a 9-point earthquake according the MSK-64 scale.

## FLEXIBILITY

The load 1500 kg, perforation of doors 80%, seven brush cable entries in the base and roof, vertical cable organizers.





# POWER SOLUTIONS

## PDU AND ATS

Power distribution units and ATS form a functionally complete set of products that allow solving the entire spectrum of power management tasks for active network equipment in the data center hardware room.

Remote control of the total load and remote control of each socket. Vertical and horizontal installation. Extended operating temperature range 0 ... 65 ° C at rated power for use in systems with high thermal loads. The robust, compact design ensures that these products can be used wherever reliability and density are important.

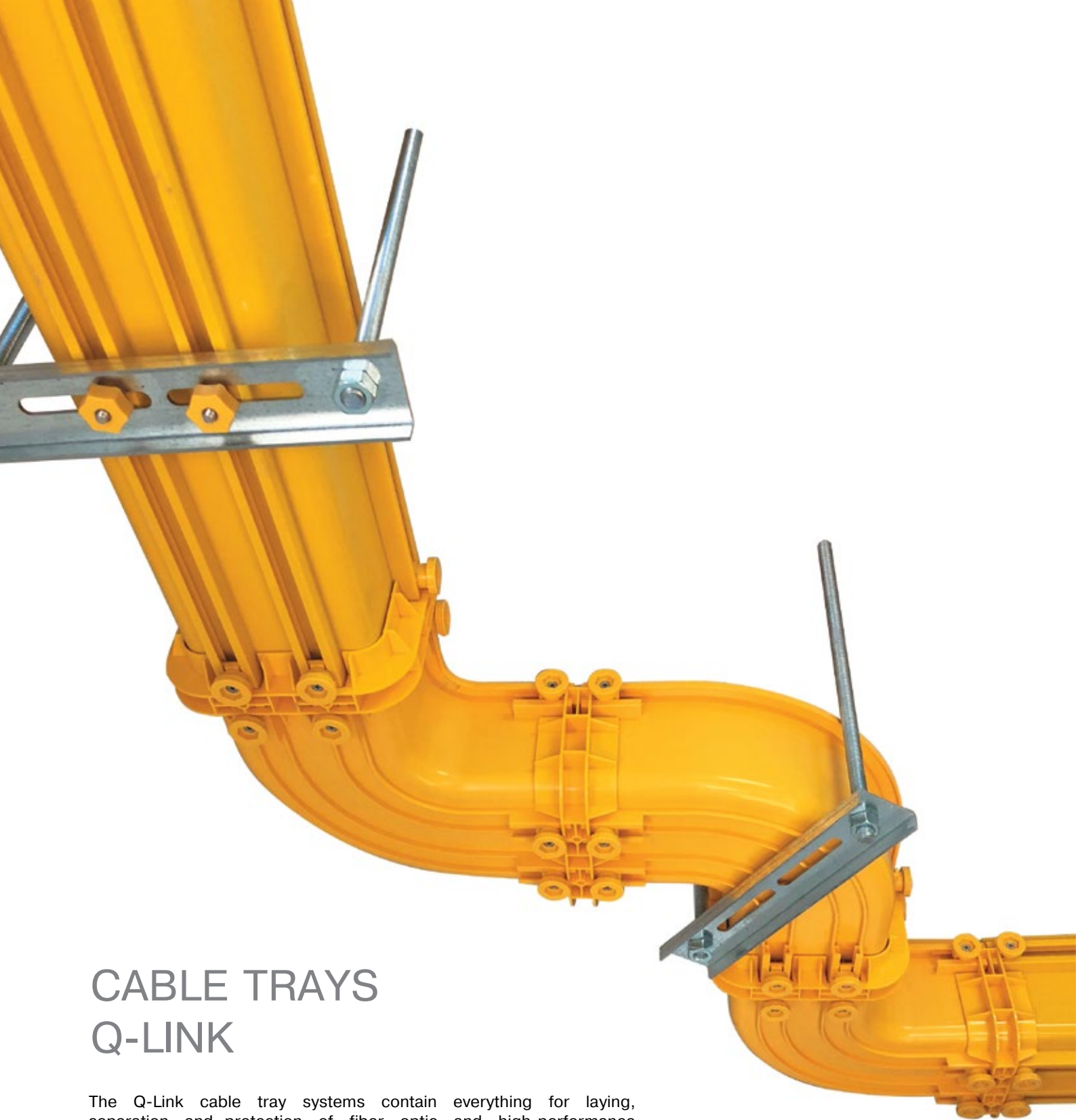
- Fully metal housing
- Installation in Zero-U-trays
- Single- and three-phase
- Rated voltage: 230; 400 B
- Output sockets: Schuko 2K + 3, C13, C19

The ATS units are designed to automatically switch to the power supply from the backup line in the event of a main failure. Used in the power supply system, which has two independent power feeders.

## POWER SOLUTIONS

A wide range of products for the efficient and safe distribution of power to information systems and data centers with power from 2.3 to 22.2 kVA.





## CABLE TRAYS Q-LINK

The Q-Link cable tray systems contain everything for laying, separation and protection of fiber optic and high-performance copper cables. The increased capacity allows to lay cable routes with a large number of cables and quick connectors ensure that the channels and accessories are effectively assembled. Excessive bends are prevented by system accessories that support minimum bend radius.

### FLEXIBILITY

Plastic cable trays Q-Link is a flexible, easy-to-install system that is ideal for laying cables above cabinets and racks.





## **SWEDEN**

Johannesfredsvagen 12, SE-168 69  
Bromma E-mail: [info@eurolan.se](mailto:info@eurolan.se)  
Sjotullsgatan 9, SE-824 50 Hudiksvall  
E-mail: [hans.fredlund@eurolan.se](mailto:hans.fredlund@eurolan.se) Тел.:  
+46 70 237 8377

## **POLAND**

Sabaly 43, 02-174 Warszawa  
E-mail: [adrian.poborski@eurolan.se](mailto:adrian.poborski@eurolan.se)  
Тел.: +48 508 340 226

## **RUSSIA**

115193, Moscow,  
7 Kozhukhuvskaya Str., 15-1  
E-mail: [moscow@eurolan.com](mailto:moscow@eurolan.com)  
Тел.: +7 495 252-07-99

## **FINLAND**

Asiakkaankatu 3, FI-00930 Helsinki  
E-mail: [tero.huotari@eurolan.se](mailto:tero.huotari@eurolan.se)  
Тел.: +358 40 024 1100