



OFFICE

EUROLAN

CONNECT IT

Since 1 November 2021, Eurolan has been acquired by Ahlsell AB. Ahlsell is at the forefront and strives to constantly develop its offer around new, exciting technology that gives you added value. A big customer benefit with Ahlsell's acquisition of Eurolan is that you as an installer now have access to a really good product range and can also shop for everything in the same place.

Eurolan Group is one of the leading european suppliers of copper and fiber optic cabling systems (SCS), fiber to the home (FTTx), 19-inch telecommunication racks and universal home networking.

Our goal is to efficiently produce innovative products of high quality and to competitive prices. Our system designers are constantly in search of new solutions and improvement of the quality of existing products.

We have a wide range of solutions for information systems of both corporate and residential sectors.

The entire Eurolan range is stored in Ahlsell's logistics center in Hallsberg for delivery the day after ordering, as well as a larger range in Ahlsell's stores around Sweden, Norway and Finland.

ahlsell

SUNDA HUS / BYGGVARUBEDÖMNINGEN

Byggvarubedömningen shall provide optimal tools for facilitating the building and real estate sector's players to choose building materials that contribute to sustainable development. Through an active dialogue with material manufacturers, the Building Supply Assessment shall constitute the obvious choice for registration of products.

SundaHus offers property owners security, now and in the future, through a wide range of services for conscious choice of materials. With a web-based system and qualified advice, SundaHus is a holistic solution to systematize the work of phasing out hazardous substances in a building's entire life cycle.

25-YEAR SYSTEM WARRANTY

As technology advances, the demands on the transmission rate in our data networks also increase. This also reduces the margins in the components, which imposes even higher demands on the installers regarding theoretical and practical knowledge of the products and data networks.

In order to increase the quality, secure the function and minimize costs, we therefore offer installation companies free courses in the form of certification courses where we want to provide information about Eurolan products and what it takes to install a residential or real estate network.

- FLOOR DISTRIBUTION -

C6 UTP SLIMLINE CABLE

EuroLAN Category 6 is a halogen free (LSZH) distribution network cable.
The cable is verified to 250 MHz bandwidth.
Complies with the specifications according to EIA/TIA-568-C.2;
ISO/IEC 11801 2nd ed; IEC 61156-5; EN 50173; EN 50288-6-1; IEEE 802.3at.
Supports ethernet protocols: 10Mbit/100Mbit/1000Mbit (1Gbit).

Copper diameter: 0,55mm
Isolation: Polyethylene
Outer diameter: 5,4 mm
Number of pairs: 4 twisted pairs
Weight: 31 kg/km
Color: White
Jacket: Halogen free (LSZH)



E-number	Part number	Description
4903203	19D-U6-25WT-B305	EuroLAN C6 4 pair UTP LSZH Slimline Dca 305m/box
4903205	19D-U6-25WT-T500	EuroLAN C6 4 pair UTP LSZH Slimline Dca 500m/reel
4903202	19D-U6-25WT-B100	EuroLAN C6 4 pair UTP LSZH Slimline Dca 100m/box

Only 5.4 mm
in diameter

C6 UTP CABLE SIAMESE

EuroLAN Category 6 is a halogen free (LSZH) distribution network cable.
The cable is verified to 250 MHz bandwidth.



Complies with the specifications according to EN50173-1:2011 Class E, ISO/IEC 11801 and IEC 332-1.
Supports Ethernet protocols: 10Mbit/100Mbit/1000Mbit (1Gbit).

Copper diameter: 0,54mm
Isolation: Polyethylene
Outer diameter: 6,4x13,5mm
Number of pairs: 4 twisted pairs
Weight: 72 kg/km
Color: White
Jacket: Halogen free (LSZH)



E-number	Part number	Description
4903305	19SD-U6-23WT-R500	EuroLAN Siamese 2xCat6 4pair U/UTP Dca LSZH white 500m/reel

- FLOOR DISTRIBUTION -

C6A UTP CABLE

EuroLAN Category 6A UTP is a halogen free (LSZH) distribution network cable. The cable is verified to 500 MHz bandwidth (10Gbit Ethernet).



Complies with the specifications according to EIA/TIA 568-C.1; ISO/IEC 11801 2nd ed; IEC 61156-5; EN 50173; EN 50288-11-1; IEEE 802.3at.
Supports Ethernet protocols: 10Mbit/100Mbit/1000Mbit/10000Mbit (10Gbit).

Copper diameter: 0,565mm
Isolation: Polyethylene
Outer diameter: 7,7 mm
Number of pairs: 4 twisted pairs
Weight: 60 kg/km
Color: White
Jacket: Halogen free (LSZH)



E-number	Part number	Description
4902005	19D-UA-DCA-R500WT	EuroLAN C6a 4pair U/UTP LSZH White DCA 500m/reel

C6A SHIELDED CABLE

EuroLAN Category 6A X/FTP is a halogen free (LSZH) distribution network cable. The cable is verified to 500 MHz bandwidth (10Gbit Ethernet).
EIA/TIA-568-C.2; ISO/IEC 11801; IEEE 802.3at; EN50173-1; EN50288-10; IEC 61156-5; LSZH: IEC 60332-1; 60754-2; 61034



C6A U/FTP

E-number	Part number	Description
4903215	19D-TA-23WT-R500	EuroLAN C6A 4 pair U/FTP LSZH Dca 500m/reel 6,9mm
4903265	19SD-TA-23WT-R500	EuroLAN C6A 4 pair 2xU/FTP LSZH Dca 500m/reel 6,9x13,9mm



C6A F/FTP

E-number	Part number	Description
4903225	19D-ZA-23WT-R500	EuroLAN C6A 4 pair F/FTP LSZH Dca 500m/reel 7,3mm

- FLOOR DISTRIBUTION -

C6A S/FTP



E-number	Part number	Description
4903235	19D-SA-23WT-R500	Eurolan C6A 4 pair S/FTP LSZH Dca 500m/reel 7,3mm

C7 S/FTP CABLE

Eurolan Category 7 S/FTP is a halogen free (LSZH) distribution network cable. The cable is verified to 900 MHz bandwidth (10Gbit Ethernet).

Complies with the specifications according to EIA/TIA 568-C.1; ISO/IEC 11801; IEC 61156-5; EN 50173; EN 50288-4-1; IEEE 802.3af.

Supports Ethernet protocols: 10Mbit/100Mbit/1000Mbit/10000Mbit (10Gbit).



Copper diameter: 0,56mm

Isolation: Polyethylene

Outer diameter: 7,5 mm

Number of pairs: 4 twisted pairs

Weight: 58,6 kg/km

Color: White

Jacket: Halogen free (LSZH)



E-number	Part number	Description
4903245	19D-F7-23WT-R500	Eurolan C7 4pair S/FTP 900 mhz Dca LSZH 500m/reel

C7A S/FTP CABLE

Eurolan Category 7A S/FTP is a halogen free (LSZH) distribution network cable. The cable is verified to 1200 MHz bandwidth (10Gbit Ethernet).

CATV, Broadband Video.

Complies with the specifications according to EIA/TIA 568-C.1; ISO/IEC 11801; IEC 61156-5; EN 50173; EN 50288-9-1; IEEE 802.3af.

Supports Ethernet protocols: 10Mbit/100Mbit/1000Mbit/10000Mbit (10Gbit).



Copper diameter: 0,58mm

Isolation: Polyethylene

Outer diameter: 7,8 mm

Number of pairs: 4 twisted pairs

Weight: 68 kg/km

Color: White

Jacket: Halogen free (LSZH)



E-number	Part number	Description
4903255	19D-F7A-23WT-R500	Eurolan C7A 4pair S/FTP 1200mhz Dca LSZH 500m/reel



- FLOOR DISTRIBUTION -



C6 UTP KEYSTONE JACK

Eurolan Keystone C6 comes in a toolless version (16B-U6-05WT) and a version where termination is made by IDC 110 tool or Eurolan Quick tool.

Verified to 250 MHz and manage applications up to 1 Gbit.

Conforms to specifications according to RoHS, EN 50173-1 Class E, ISO/IEC 11801; IEC 332-1



E-number	Part number	Description
5147286	16B-U6-03BL*	Eurolan Keystone RJ45 Cat 6 black
5147285	16B-U6-03WT*	Eurolan Keystone RJ45 Cat 6 white
5147287	16B-U6-05BL	Eurolan Keystone RJ45 Toolless Cat 6 Black
5147288	16B-U6-05WT	Eurolan Keystone RJ45 Toolless Cat 6 White
5140041	16B-U6-03WT-100*	Eurolan Keystone RJ45 Cat 6 white 100pcs

Reduce waste and time,
choose the multipack
16B-U6-03WT-100

* termination is made by IDC 110 tool or Eurolan Quick tool.



C6A UTP KEYSTONE JACK

Eurolan Keystone C6A comes in a version where termination is made by IDC 110 tool or Eurolan Quick tool.

Verified to 500 MHz and manage applications up to 10 Gbit.

Complies with the specifications according to ISO/IEC 11801:2011 (Ed 2.2);

IEC 60603-7-41:2010; IEC 60512-99-001:2012 (Ed. 1.0) EN 50173-1:2011;

EN 50173-2:2007 incl amendm. A1:2010; ANSI/TIA-568-C.2:2009.

Supports Ethernet protocols: 10Mbit/100Mbit/1000Mbit/10000Mbit (10Gbit).



E-number	Part number	Description
5140252	16B-UA-03WT	Eurolan Keystone Cat 6a UTP Q-toolready, white

- FLOOR DISTRIBUTION -



C6A SHIELDED KEYSTONE JACK

EuroLAN Keystone C6A comes in a toolless version (16B-EA-04SL) and a version where termination is made by IDC 110 tool or EuroLAN Quick tool.

Verified to 500 MHz and manage applications up to 10 Gbit.

Conforms to specifications according to: RoHS, ISO/IEC 11801:2011 (ed 2.2); IEC 60603-7-51:2010; IEC 60512 99001:2012 (ed. 1.0); EN 50173-1:2011; EN 50173-2:2007 (incl. A1:2010); ANSI/TIA-568-C.2:2009



E-number	Part number	Description
5140029	16B-EA-07SL-D	EuroLAN Keystone RJ45 Cat 6A silver
5147291	16B-EA-04SL	EuroLAN Keystone RJ45 Toolless Cat 6A silver



QUICK TOOL

EuroLAN Quick Tool enables quick installations of EuroLAN keystone jack. Mounts and cuts 4 pairs at a time. The Quick tool tool saves up to 85% of the time of contact compared to traditional 110 tools.

E-number	Part number	Description
1649770	10F-01-01	EuroLAN Quick Tool
1649771	10-QT-M180	EuroLAN Quick Tool cutting module



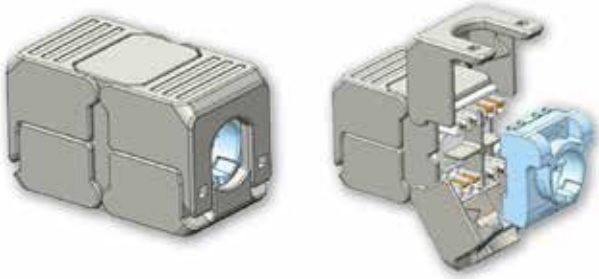
C6A MALE STP TERMINATION PLUG

EuroLAN RJ45 C6A Male STP termination plug for terminating on shielded solid C6A cable. Verified to 500 MHz and manage applications up to 10 Gbit and conforms to specifications according to: ISO/IEC 11801- C6A. Termination is made without special tool.

E-number	Part number	Description
5140278	13A-EA-03SL	EuroLAN direct termination shielded plug Cat6A



- FLOOR DISTRIBUTION -



C6A CABLE CONNECTOR

Eurolan C6A Female/Female STP is for jointing shielded solid C6A cable. Verified to 500 MHz and manage applications up to 10 Gbit and conforms to specifications according to: ISO/IEC 11801- C6A. Termination is made without special tool.

E-number	Part number	Description
5140316	16B-EA-13SL	Eurolan straight F/F connector Cat6A STP

C6 UTP PATCHPANEL UNLOADED FOR KEYSTONE

19" patchpanel 24/48 port with Eurolan keystone footprint.

The panel is built in black painted steel.

27B-00-24BL

Cable striping organizer is included as well as marking list for 24 ports. 1U.

27B-00-48BL*

Cable striping organizer is included. 1U.

27B-00-24-05BL*

Cable striping organizer is included. 0,5U.

*NOTE! Eurolan Toolless Keystone do NOT fit in this panel.



E-number	Part number	Description
5120075	27B-00-24BL	Eurolan Patchpanel 1U 24 port Keystone snap-in
5120099	27B-00-48BL	Eurolan Patchpanel 1U 48 port Keystone snap-in
5120113	27B-00-24-05BL	Eurolan Patchpanel 0,5U 24 port Keystone snap-in



- FLOOR DISTRIBUTION -



ANGLED PATCHPANEL, UNLOADED FOR KEYSTONE

19" angled patchpanel 24/48 port with Eurolan keystone footprint.

The body of the panel is made of galvanized steel to protect oxidation between cable shield, keystone jack and panel.

Suitable for both un- and shielded Eurolan keystone jack.

1U/2U. Cable striping organizer is included as well as marking list for 24 ports.

E-number	Part number	Description
5120152	27A-00-24BL	Eurolan Angled Patch Panel Snap-in 1U, 24port UTP/FTP
5120114	27A-00-48BL	Eurolan Angled Patch Panel Snap-in 2U, 48port UTP/FTP



C6A UTP PATCHPANEL, UNLOADED FOR KEYSTONE

19" patchpanel 24 port with Eurolan keystone footprint.

The panel is built in black painted steel. 1U.

Cable striping organizer is included as well as marking list for 24 ports.

E-number	Part number	Description
5120071	27B-00-24BL-UA	Eurolan Patchpanel 1U 24 port C6A Keystone snap-in



C6A SHIELDED PATCHPANEL, UNLOADED FOR KEYSTONE

19" patchpanel 24 port with Eurolan keystone footprint.

The body of the panel is made of galvanized steel to protect oxidation between cable shield, keystone jack and panel. 1U.

Cable striping organizer is included as well as marking list for 24 ports.

E-number	Part number	Description
5126369	27F-00-24BL	Eurolan Patchpanel 1U 24 port C6A Keystone snap-in

- FLOOR DISTRIBUTION -



WALL OUTLETS

EuroLAN socket for broadband installations and traditional real estate networks.

For exterior or recessed mounting.

The outlet cap has a dust hatch and fits all EuroLANs keystone sockets.

For external mounting, the socket is supplemented with the EuroLAN Wallbox.

RAL 9010 and halogen free (LSZH). Conforms to specifications according to RoHS.

E-number	Part number	Description
5118514	12B-1X-01WT	EuroLAN Faceplate 86x86 1xAngled Keystone
5118515	12B-1X-02WT	EuroLAN Faceplate 86x86 2xAngled Keystone
5118517	12B-1X-03WT	EuroLAN Faceplate 86x86 3xAngled Keystone
5118516	16H-FR-40WT	EuroLAN Wall box 40mm white



RS/Plus or Exxact design? Custom center plates for EuroLAN keystones.

CENTER PLATES, RS/PLUS, EXXACT AND MOSAIC

For broadband installations and traditional real estate networks.

For exterior or recessed mounting. It comes with one blind plug if 1xKeystone is required.

The outlet cap has a dust hatch and fits all EuroLANs keystone sockets.

For external mounting, the socket is supplemented with requisite wallbox that suits the brand.

RAL 9010 (RS/Plus) RAL 9003 (Exxact) and halogen free.

Mosaic is ready for directly snap-in.

E-number	Part number	Description
5100209	12B-1X-04WT	EuroLAN Faceplate 56x56 2xAngled Keystone Plus/RS
5100215	12B-1X-04WT	EuroLAN Faceplate 56x56 2xAngled Keystone Exxact
5100216	16A-00-08WT	EuroLAN Faceplate 45x45 2xAngled Keystone Mosaic

- FLOOR DISTRIBUTION -



WALLBOXES

Eurolan wall box for 1, 2, 4 or 6 Eurolan keystone.

For external mounting.

The boxes comes with transparent signature on the lid and icon for data labeling.

The outlet cap has a dust hatch and fits all Eurolan keystone sockets.

Cable input via "knockout" on the sides. Cable entry via hole from the back.

Fixing is done with the supplied screws.

RAL 9010 and halogen free (LSZH).

Conforms to specifications according to RoHS.

NOTE! If you use Eurolan Toolless jack you have to snap off the jumper at the bottom of the box.

E-number	Part number	Description
5118508	12B-04-01WT-2	Eurolan Wall mount box 1xKeystone
5118507	12B-04-02WT-2	Eurolan Wall mount box 2xKeystone
5118513	12B-04-04WT	Eurolan Wall mount box 4xKeystone
5118511	12B-04-06WT	Eurolan Wall mount box 6xKeystone



DIN RAIL ADAPTER

Eurolan adapter for mounting at DIN-rail. With dustcover. Fits all of Eurolan Keystone.

RAL 9010 and halogen free (LSZH).

Conforms to specifications according to RoHS.

E-number	Part number	Description
5140117	16B-00-42GY	Eurolan DIN rail adapter for keystone white

- FLOOR DISTRIBUTION -

C6 UNSHIELDED PATCHCORDS

EuroLAN Category 6 unshielded is a halogen free (LSZH) patchcord. Characterized up to 250 MHz Completes the Ethernet protocol 10Mb, 100Mb Gigabit Ethernet. Follows the RoHS directives and have molded connectors. Delivered piece packed in pin pack.

E-number	Part number	Description
5153145	21D-U6-0EWT	EuroLAN RJ45-RJ45 LSZH C6 UTP 0,5m white
5153146	21D-U6-01WT	EuroLAN RJ45-RJ45 LSZH C6 UTP 1m white
5153147	21D-U6-02WT	EuroLAN RJ45-RJ45 LSZH C6 UTP 2m white
5153148	21D-U6-03WT	EuroLAN RJ45-RJ45 LSZH C6 UTP 3m white
5153149	21D-U6-05WT	EuroLAN RJ45-RJ45 LSZH C6 UTP 5m white
5153150	21D-U6-07EWT	EuroLAN RJ45-RJ45 LSZH C6 UTP 7,5m white
5153151	21D-U6-10WT	EuroLAN RJ45-RJ45 LSZH C6 UTP 10m white
5153152	21D-U6-15WT	EuroLAN RJ45-RJ45 LSZH C6 UTP 15m white
5153153	21D-U6-20WT	EuroLAN RJ45-RJ45 LSZH C6 UTP 20m white

C6A UNSHIELDED PATCHCORDS

EuroLAN Category 6A unshielded is a halogen free (LSZH) patchcord. Characterized up to 500 MHz Completes the Ethernet protocol 10Mb, 100Mb, 1000Mb Gigabit Ethernet. Follows the RoHS directives and have molded connectors. Delivered piece packed in pin pack.

E-number	Part number	Description
5151540	21D-UA-0EWT	EuroLAN RJ45-RJ45 LSZH C6A UTP 0,5m white
5151546	21D-UA-01WT	EuroLAN RJ45-RJ45 LSZH C6A UTP 1m white
5151548	21D-UA-01EWT	EuroLAN RJ45-RJ45 LSZH C6A UTP 1,5m white
5151549	21D-UA-02WT	EuroLAN RJ45-RJ45 LSZH C6A UTP 2m white
5151550	21D-UA-03WT	EuroLAN RJ45-RJ45 LSZH C6A UTP 3m white
5151551	21D-UA-05WT	EuroLAN RJ45-RJ45 LSZH C6A UTP 5m white
5151556	21D-UA-07WT	EuroLAN RJ45-RJ45 LSZH C6A UTP 7m white
5151557	21D-UA-10WT	EuroLAN RJ45-RJ45 LSZH C6A UTP 10m white

- FLOOR DISTRIBUTION -



C6A SHIELDED PATCHCORDS

EuroLAN Category 6A shielded is a halogen free (LSZH) patchcord.

Characterized up to 500 MHz Completes the Ethernet protocol 10Mb, 100Mb, 1000Mb Gigabit Ethernet.

Follows the RoHS directives and have molded connectors.

Delivered piece packed in pin pack.



E-number	Part number	Description
5153280	21D-SA-0EWT	EuroLAN RJ45-RJ45 LSZH C6A S/FTP 0,5m white
5153281	21D-SA-01WT	EuroLAN RJ45-RJ45 LSZH C6A S/FTP 1m white
5153282	21D-SA-1EWT	EuroLAN RJ45-RJ45 LSZH C6A S/FTP 1,5m white
5153283	21D-SA-02WT	EuroLAN RJ45-RJ45 LSZH C6A S/FTP 2m white
5153284	21D-SA-03WT	EuroLAN RJ45-RJ45 LSZH C6A S/FTP 3m white
5153285	21D-SA-05WT	EuroLAN RJ45-RJ45 LSZH C6A S/FTP 5m white
5153286	21D-SA-7EWT	EuroLAN RJ45-RJ45 LSZH C6A S/FTP 7,5m white
5153287	21D-SA-10WT	EuroLAN RJ45-RJ45 LSZH C6A S/FTP 10m white



- FLOOR DISTRIBUTION -



C6 UNSHIELDED ADAPTER PATCHCORD

EuroLAN Adapter-Patch cords are used for a connection of a CP=Consolidation point.

The Adapter Patch cords are complete with Keystone-RJ45.

U/UTP Adapter Patch cords are made by solid copper and have a flame retardant jacket.

The U/UTP cable is verified up to 250MHz.

E-number	Part number	Description
5153083	23D-U6-7EWT	EuroLAN Patchcord C6 U/UTP solid RJ45-Keystone 7,5m
5153084	23D-U6-10WT	EuroLAN Patchcord C6 U/UTP solid RJ45-Keystone 10m
5153085	23D-U6-15WT	EuroLAN Patchcord C6 U/UTP solid RJ45-Keystone 15m



C6A SHIELDED ADAPTER PATCHCORD

EuroLAN Adapter-Patch cords are used for a connection of a CP=Consolidation point.

The Adapter Patch cords are complete with Keystone-RJ45.

Cable is C6A S/FTP stranded and have flame retardant LSZH jacket. The cable is verified up to 500MHz.

E-number	Part number	Description
5153080	23D-SA-7EWT	EuroLAN Patchcord C6A S/FTP RJ45-Keystone 7,5m
5153081	23D-SA-10WT	EuroLAN Patchcord C6A S/FTP RJ45-Keystone 10m
5153082	23D-SA-15WT	EuroLAN Patchcord C6A S/FTP RJ45-Keystone 15m



FIBERCABLE UNI LT 9/125 OS2 SINGLEMODE

Eurolan Uni-loose tube fiber cables are used in backbone, distribution networks or in FTTH solutions. Can be placed inside or outside in pipes. The cable has fixed secondary protection.



Flame retardant (IEC 60332-1)

Fire retardant 60332-3)

Halogen free (IEC 60754-1/-2)

Low smoke emission (IEC 61034-2)

Mechanical and environmental test according to IEC 60794-1-21 and IEC 60792-1-22

Central tube: Jelly filled

Applications: Universal (In /outdoor)

Outer diameter: 7-8 mm

CPR Classification: Dca,s2,d2,a2

Color: Yellow

Jacket: Halogen free (LSZH)

Length: 2000 meters/drum



E-number	Part number	Description
4968367	39UD-S1-04-02YL	Uni LT FO cable In/Out Dca LSZH 4x9/125
4968377	39UD-S1-08-02YL	Uni LT FO cable In/Out Dca LSZH 8x9/125
4968387	39UD-S1-12-02YL	Uni LT FO cable In/Out Dca LSZH 12x9/125
4968397	39UD-S1-24-02YL	Uni LT FO cable In/Out Dca LSZH 24x9/125

FIBERCABLE LT 9/125 OS2 SINGLEMODE

Eurolan Loose tube fiber cables are used in backbone, datacenters. Can be placed inside or outside in pipes.



Standards: IEC 60794-1-21 and IEC 60794-1-22

Flame retardant (IEC 60332-1)

Halogen free (IEC 60754-1/-2)

Low smoke emission (IEC 61034-2)

Tubes: Dry

Applications: Universal (In /outdoor)

Outer diameter: 48=8,3mm; 96=9,8mm

CPR Classification: Dca,s2,d2,a2

Color: Yellow

Jacket: Halogen free (LSZH)



E-number	Part number	Description
4703012	39LD-S1-48YL	Eurolan LT FO cable in/out LSZH 48x9/125 Yellow (4x12) Dca
4703002	39LD-S1-96YL	Eurolan LT FO cable in/out LSZH 96x9/125 Yellow (8x12) Dca

FIBERCABLE MICRO BEND TB 2X9/125 OS2 SINGLEMODE

Eurolan Microbend distribution is a SM fiber cable designed for broadband installations. The fiber cable has a glass with G.657.A technique which makes it very insensitive to micro bends.



E-number	Part number	Description
4963147	39UD-S1M-02D	Tightbuffered FO cable Indoor G657 LSZH 2x9/125 Dca

FIBERCABLE UNI LT 50/125 OM4 MULTIMODE

Eurolan Uni-loose tube fiber cables are used in backbone, distribution networks or in FTTH solutions. Can be placed inside or outside in pipes. The cable has fixed secondary protection.
Flame retardant (IEC 60332-1)
Fire retardant 60332-3)
Halogen free (IEC 60754-1/-2)
Low smoke emission (IEC 61034-2)
Mechanical and environmental test according to IEC 60794-1-21 and IEC 60792-1-22



Central tube: Jelly filled

Applications: Universal (In /outdoor)

Outer diameter: 7-8 mm

CPR Classification: Dca,s2,d2,a1

Color: Pink

Jacket: Halogen free (LSZH)

Length: 2000 meters/drum



E-number	Part number	Description
4968467	39UD-40-04-02PI	Uni LT FO cable In/Out Dca LSZH 4x50/125
4968477	39UD-40-08-02PI	Uni LT FO cable In/Out Dca LSZH 8x50/125
4968487	39UD-40-12-02PI	Uni LT FO cable In/Out Dca LSZH 12x50/12
4968497	39UD-40-24-02PI	Uni LT FO cable In/Out Dca LSZH 24x50/125



- BACKBONE / CAMPUS -



MICRO DUCTS / INDOOR

Eurolan indoor micro ducts for blown fiber installations in dimension 5 / 3.5.

The micro ducts are fire rated in accordance with IEC 60332-1.

They are available in white color and in sizes 1, 4, 7, 12, 24.

E-number	Part number	Description
5044230	39P-I1-01-23WT	Eurolan single tube 5/3,5mm FRLSOH indoor
5044231	39P-I1-04-23WT	Eurolan 4xtube 5/3,5mm FRLSOH indoor
5044232	39P-I1-07-23WT	Eurolan 7xtube 5/3,5mm FRLSOH indoor
5044233	39P-I1-12-23WT	Eurolan 12xtube 5/3,5mm FRLSOH indoor
5044235	39P-I1-24-23WT	Eurolan 24xtube 5/3,5mm FRLSOH indoor



MICRO DUCTS / ACCESSORIES

Eurolan duct joints for connecting Eurolan micro ducts.

Mounting between the tub and joint is easily done by pushing the tube into the joint. Important that the tube is cut with a tube cutter to avoid blowing problems. The joints are easily opened by holding the latch ring and pulling the tube.

E-number	Part number	Description
5044250	37B-FO-05-01	Connector 5 mm non protected
5044252	37B-FO-05-05	Connector Stop 5 mm
5044253	37B-FO-05/07	Connector reduction 5/7

- BACKBONE / CAMPUS -



BLOWNFIBER SM 9/125 EPSU

Eurolan blown fiber for flexible and cost-effective solutions. The cable is designed to be blown into tubes with an internal dimension of 3.5mm.

Available with 2, 4, 8 and 12 fibers. 2 fiber and 4 fiber have G 657.A glass while 8 and 12 fiber have G 652.D glass.

E-number	Part number	Description
5044246	39BS-S3-02YL	Eurolan Blown fiber smooth surface 2x9/125 G657
5044548	39BS-S3-04YL	Eurolan Blown fiber smooth surface 4x9/125 G657
5044549	39BS-S3-08YL	Eurolan Blown fiber smooth surface 8x9/125 G657
5044550	39BS-S3-12YL	Eurolan Blown fiber smooth surface 12x9/125 G657

BLOWNFIBER SM 9/125

Eurolan blown fiber for flexible and cost-effective solutions.

The cable is designed to be blown into tubes with an internal dimension of 3.5mm.

Preterminated with 2xSC in one end for blowing.



E-number	Part number	Description
5073041	39B-S3-20-2SC	Eurolan Blown Fiber Pigtail ITU 657 2xSC 20m
5068393	39B-S3-30-2SC	Eurolan Blown Fiber Pigtail ITU 657 2xSC 30m
5068394	39B-S3-50-2SC	Eurolan Blown Fiber Pigtail ITU 657 2xSC 50m
5068395	39B-S3-70-2SC	Eurolan Blown Fiber Pigtail ITU 657 2xSC 70m
5075531	39B-S3-100-2SC	Eurolan Blown Fiber Pigtail ITU 657 2xSC 100m
5073042	39B-S3-150-2SC	Eurolan Blown Fiber Pigtail ITU 657 2xSC 150m

- BACKBONE / CAMPUS -



PIGTAIL SINGLEMODE OS2/UPC

Eurolan pigtails are delivered with 900um outer sheath.

Glass G652.D

Pieced packed with measurement protocols for each individual pigtail.

TIA/EIA-568B.3, Belcore GR-020 and UL OFNR/FT4.

E-number	Part number	Description
5073209	42B-S1-LC-01U	Eurolan Pigtail LC 9/125 1m UPC
5072334	42B-S1-LC-01U-12	Eurolan Pigtail LC 9/125 1m UPC (12 pcs/box)
5070311	42B-S1-SC-01U	Eurolan Pigtail SC 9/125 1m UPC
5072337	42B-S1-SC-01U-12	Eurolan Pigtail SC 9/125 1m UPC (12 pcs/box)

PIGTAIL MULTIMODE OM4

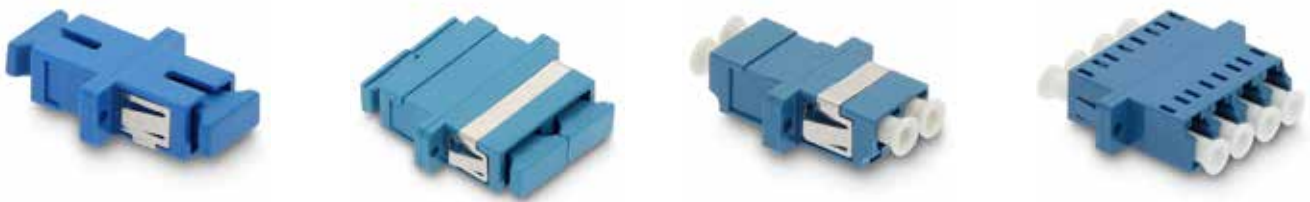
Eurolan pigtails are delivered with 900um outer sheath.

Pieced packed with measurement protocols for each individual pigtail.



E-number	Part number	Description
5072320	42B-40-LC-01	Eurolan Pigtail LC 50/125 1m
5072324	42B-40-LC-01-12	Eurolan Pigtail LC 50/125 1m (12 pcs/box)
5072329	42B-40-SC-01	Eurolan Pigtail SC 50/125 1m
5072331	42B-40-SC-01-12	Eurolan Pigtail SC 50/125 1m (12 pcs/box)

- BACKBONE / CAMPUS -



FIBER ADAPTERS OS2/UPC

Eurolan Singlemode adapters are available in SC and LC versions. They are made with ceramic sleeve and are designed to manage over 500 cycles.

E-number	Part number	Description
5064082	36A-S1-SC-BU	Eurolan Adapter 1xSC UPC, blue
5063785	36A-S1-2SC-BU	Eurolan Adapter 2xSC UPC, blue
5064081	36A-S1-2LC-BU	Eurolan Adapter 2xLC UPC singel SC footprint, blue
5063788	36B-S1-4LC-BU	Eurolan Adapter 4xLC UPC, blue



FIBER ADAPTERS OM4

Eurolan Multimode adapters are available in SC and LC versions and are designed to manage over 500 cycles.

E-number	Part number	Description
5063101	36A-M1-2SC-VI	Eurolan Adapter 2xSC OM4 violet
5063102	36B-40-2LC-VI	Eurolan Adapter 2xLC OM4 violet
5063103	36B-40-4LC-VI	Eurolan Adapter 4xLC OM4 violet



PROTECTIVE SLEEVES

Eurolan FO sleeve is a 60/45/40 mm protective sleeve for fiber splicing.

E-number	Part number	Description
5062862	32C-MS-60	Eurolan FO protective sleeve, 60mm
5062863	32C-MS-45	Eurolan FO protective sleeve, 45mm
5062054	32C-MS-40	Eurolan FO protective sleeve, 40mm



- BACKBONE / CAMPUS -



PATCHCORD 9/125 OS2 SINGLEMODE

Kevlar reinforced. Comes in standard with 2mm outer jacket and LSZH. G.652D glass in standard. All connectors are equipped with zirconia ferrules and conform to TIA/EIA568.3, Bellcore GR-02. Test protocol comes with each item.

LC-LC

E-number	Part number	Description
5076900	41F-S1-LC-LC-01U	Eurolan Patchcord 2xLC-LC 9/125 1m UPC
5076901	41F-S1-LC-LC-02U	Eurolan Patchcord 2xLC-LC 9/125 2m UPC
5076902	41F-S1-LC-LC-03U	Eurolan Patchcord 2xLC-LC 9/125 3m UPC
5076903	41F-S1-LC-LC-05U	Eurolan Patchcord 2xLC-LC 9/125 5m UPC
5076904	41F-S1-LC-LC-07U	Eurolan Patchcord 2xLC-LC 9/125 7m UPC
5076905	41F-S1-LC-LC-10U	Eurolan Patchcord 2xLC-LC 9/125 10m UPC
5076906	41F-S1-LC-LC-15U	Eurolan Patchcord 2xLC-LC 9/125 15m UPC
5076907	41F-S1-LC-LC-20U	Eurolan Patchcord 2xLC-LC 9/125 20m UPC

SC-LC

E-number	Part number	Description
5076350	41F-S1-SC-LC-01U	Eurolan Patchcord 2xSC-LC 9/125 1m UPC
5076351	41F-S1-SC-LC-02U	Eurolan Patchcord 2xSC-LC 9/125 2m UPC
5076352	41F-S1-SC-LC-03U	Eurolan Patchcord 2xSC-LC 9/125 3m UPC
5076353	41F-S1-SC-LC-05U	Eurolan Patchcord 2xSC-LC 9/125 4m UPC
5076354	41F-S1-SC-LC-07U	Eurolan Patchcord 2xSC-LC 9/125 7m UPC
5076355	41F-S1-SC-LC-10U	Eurolan Patchcord 2xSC-LC 9/125 10m UPC
5076356	41F-S1-SC-LC-15U	Eurolan Patchcord 2xSC-LC 9/125 15m UPC
5076357	41F-S1-SC-LC-20U	Eurolan Patchcord 2xSC-LC 9/125 20m UPC

SC-SC

E-number	Part number	Description
5076310	41F-S1-SC-SC-01U	Eurolan Patchcord 2xSC-SC 9/125 1m UPC
5076311	41F-S1-SC-SC-02U	Eurolan Patchcord 2xSC-SC 9/125 2m UPC
5076312	41F-S1-SC-SC-03U	Eurolan Patchcord 2xSC-SC 9/125 3m UPC
5076313	41F-S1-SC-SC-05U	Eurolan Patchcord 2xSC-SC 9/125 5m UPC
5076314	41F-S1-SC-SC-07U	Eurolan Patchcord 2xSC-SC 9/125 7m UPC
5076315	41F-S1-SC-SC-10U	Eurolan Patchcord 2xSC-SC 9/125 10m UPC
5076316	41F-S1-SC-SC-15U	Eurolan Patchcord 2xSC-SC 9/125 15m UPC
5076317	41F-S1-SC-SC-20U	Eurolan Patchcord 2xSC-SC 9/125 20m UPC

- BACKBONE / CAMPUS -



PATCHCORD 50/125 OM4 MULTIMODE

Kevlar reinforced.

Comes in standard with 2mm outer jacket and LSZH.

G.652D glass in standard.

All connectors are equipped with zirconia ferrules and conform to TIA/EIA568.3, Bellcore GR-02.

Test protocol comes with each item.

LC-LC

E-number	Part number	Description
5072368	41F-40-LC-LC-01	Eurolan Patchcord 2xLC-LC 50/125 OM4 1m
5072369	41F-40-LC-LC-02	Eurolan Patchcord 2xLC-LC 50/125 OM4 2m
5072371	41F-40-LC-LC-03	Eurolan Patchcord 2xLC-LC 50/125 OM4 3m
5072372	41F-40-LC-LC-05	Eurolan Patchcord 2xLC-LC 50/125 OM4 5m
5072373	41F-40-LC-LC-07	Eurolan Patchcord 2xLC-LC 50/125 OM4 7m
5072374	41F-40-LC-LC-10	Eurolan Patchcord 2xLC-LC 50/125 OM4 10m
5072376	41F-40-LC-LC-15	Eurolan Patchcord 2xLC-LC 50/125 OM4 15m
5072377	41F-40-LC-LC-20	Eurolan Patchcord 2xLC-LC 50/125 OM4 20m

SC-LC

E-number	Part number	Description
5072353	41F-40-SC-LC-01	Eurolan Patchcord 2xSC-LC 50/125 OM4 1m
5072354	41F-40-SC-LC-02	Eurolan Patchcord 2xSC-LC 50/125 OM4 2m
5072356	41F-40-SC-LC-03	Eurolan Patchcord 2xSC-LC 50/125 OM4 3m
5072357	41F-40-SC-LC-05	Eurolan Patchcord 2xSC-LC 50/125 OM4 5m
5072359	41F-40-SC-LC-07	Eurolan Patchcord 2xSC-LC 50/125 OM4 7m
5072360	41F-40-SC-LC-10	Eurolan Patchcord 2xSC-LC 50/125 OM4 10m
5072364	41F-40-SC-LC-15	Eurolan Patchcord 2xSC-LC 50/125 OM4 15m
5072366	41F-40-SC-LC-20	Eurolan Patchcord 2xSC-LC 50/125 OM4 20m

SC-SC

E-number	Part number	Description
5072339	41F-40-SC-SC-01	Eurolan Patchcord 2xSC-SC 50/125 OM4 1m
5072340	41F-40-SC-SC-02	Eurolan Patchcord 2xSC-SC 50/125 OM4 2m
5072344	41F-40-SC-SC-03	Eurolan Patchcord 2xSC-SC 50/125 OM4 3m
5072346	41F-40-SC-SC-05	Eurolan Patchcord 2xSC-SC 50/125 OM4 5m
5072348	41F-40-SC-SC-07	Eurolan Patchcord 2xSC-SC 50/125 OM4 7m
5072349	41F-40-SC-SC-10	Eurolan Patchcord 2xSC-SC 50/125 OM4 10m
5072351	41F-40-SC-SC-15	Eurolan Patchcord 2xSC-SC 50/125 OM4 15m
5072352	41F-40-SC-SC-20	Eurolan Patchcord 2xSC-SC 50/125 OM4 20m

- BACKBONE / CAMPUS -



ODF 19"

ODF 24xSCD 19" unloaded FO termination box for 19" mounting.

47G-00-SCD-24BL: 24xSC duplex adapter

47G-00-SC-24BL: 24xSC Simplex adapter

47G-00-SC-96BL: 48xSC Duplex adapter

Fitted with M4 screwdriver with thumb nut for easy mounting of accessories.

4 pcs of Self-adhesive cable holder for the ranking of fiber loops.

Follows the RoHS directives.

Made of black painted steel.

E-number	Part number	Description
5057975	47G-00-SCD-24-BL	Eurolan ODF 19" 24xSC Duplex 1U
5057977	47G-00-SC-24-BL	Eurolan ODF 19" 24xSC Simplex 1U
5055193	47G-00-SC-96BL	Eurolan ODF 19" 48xSC Duplex 2U BL



From apartment to basement without joints on the fiber, use micro duct and blown fiber! Future-proof your network!

ODF BLOWN FIBER 19"

ODF 24xSCD 19" unloaded FO termination box for 19" mounting.

24xSC duplex adapter/24xLC quad adapter.

24x5/3,5 mm tubes.

Fitted with M4 screwdriver with thumb nut for easy mounting of accessories.

4 pcs of Self-adhesive cable holder for the ranking of fiber loops.

Follows the RoHS directives.

Made of black painted steel.

E-number	Part number	Description
5057978	47G-00-SCD-BF-BL	Eurolan ODF 19" 24xSC Duplex 1U Blown fiber

DUST CAPS

Eurolan Dust caps is used as blind plug in fiber box for unused holes.

E-number	Part number	Description
5062860	36A-SC-BL	Eurolan SC dust cap
5062861	36A-SCD-BL	Eurolan SC duplex dust cap



EUROLAN

FLOOR CABINETS 19"

Eurolan Floor Cabinet is intended for active and passive network equipment in broad band or office networks. Grounding kit and leveling legs included.

Height: Inside: 1870 mm, outside: 2098 mm

Max load: 600 kg

Front door: Tinted glass with metal frame or entirely in metal, both with locking function. The removable door can opens both to the left and right and can easily be changed based on which direction you prefer.

Rear door: Metal, with locking function.

Upper cover plate: Ventilation holes in the ceiling of the cabinet. Fan module can be mounted on the inside of the ceiling.

Bottom: The cabinets can be placed directly on the floor, on the supplied level feet or on wheels (not included).

19"track: Zinc-lined steel track, adjustable in depth.

Cable inputs: One width-adjustable input with thick rubber edges at the bottom and one input with brushes on the rear door.

Grounding: The frame and the movable components are equipped with earth blades.

Coating: High quality powder coating.

Color: Light gray 7035 (side panels in metal)

Delivery: Mounted, in carton.



E-number	Part number	Description
2599287	60F-42-88-08GY	Eurolan 19" Racknet Cabinet 42U 800x800mm, double glass door
2599288	60F-42-88-09GY	Eurolan 19" Racknet Cabinet 42U 800x800mm, metal door



OPEN RELAY RACK 19"

Eurolan Relay Rack is a full height wall stand with basket nut hole pattern.

The stand is 42U and comes with 4 pcs of 700 mm or 500 mm wall brackets.

The stand is made of steel sheet and complies with the RoHS directive. Not divisible at height.

E-number	Part number	Description
5001025	60L-42-19-05	Eurolan Open relay rack 4x500mm
5001026	60L-42-19-07	Eurolan Open relay rack 4x700mm



WALL CABINETS

Eurolan Wall cabinet is intended for active and passive networking in broadband or office networks.

The side- and back panels are removable, with lock.

Cable entry (rubber opening) in the top, bottom and back.

Front door is reversible for left or right opening.

Delivered mounted, in carton box.

IP 20, indoor.

E-number	Part number	Description
2598587	60W-07-64-09GY	Eurolan 19" Wall Cabinet 7U 600x450mm, metal door
2598573	60W-07-65-08GY	Eurolan 19" Wall Cabinet 7U 600x560mm, glass door
2598560	60W-07-65-09GY	Eurolan 19" Wall Cabinet 7U 600x560mm, metal door
2598574	60W-09-65-08GY	Eurolan 19" Wall Cabinet 9U 600x560mm, glass door
2598561	60W-09-65-09GY	Eurolan 19" Wall Cabinet 9U 600x560mm, metal door
2598575	60W-12-65-08GY	Eurolan 19" Wall Cabinet 12U 600x560mm, glass door
2598570	60W-12-65-09GY	Eurolan 19" Wall Cabinet 12U 600x560mm, metal door
2598576	60W-16-65-08GY	Eurolan 19" Wall Cabinet 16U 600x560mm, glass door
2598571	60W-16-65-09GY	Eurolan 19" Wall Cabinet 16U 600x560mm, metal door
2598577	60W-20-65-08GY	Eurolan 19" Wall Cabinet 20U 600x560mm, glass door
2598572	60W-20-65-09GY	Eurolan 19" Wall Cabinet 20U 600x560mm, metal door

- BACKBONE / CAMPUS -



Prepared for
Assa cylinder

WALL CABINETS / METAL DOOR PREPARED FOR ASSA

Same characteristic features as 60W-07-65-09GY, 60W-09-65-09GY and 60W-12-65-09GY above, but with difference that the metal door is prepared for putting in an Assa-cylinder.

E-number	Part number	Description
2502037	60WA-07-65-09GY	Eurolan 19" Wall Cabinet 7U 600x600mm metal door ASSA
2502035	60WA-09-65-09GY	Eurolan 19" Wall Cabinet 9U 600x600mm metal door ASSA
2502036	60WA-12-65-09GY	Eurolan 19" Wall Cabinet 12U 600x600mm metal door ASSA

Weights and Measures

U (unit height)	Internal height (mm)	External height (mm)	Weight (kg)
7	314	381	21
9	403	470	23
12	536	604	26
16	714	778	30
20	892	960	35



For limited spaces!
3 + 2 U at only
14 cm deep!

VERTICAL WALL CABINET

The Eurolan slimline cabinet is a 19 "wall cabinet for tight spaces or for installation in an open environment when the design is discreet.

Height units: 5 (3 + 2) 3U in the top edge and 2U at the bottom.

Cable inputs: Bottom and from both sides.

Max weight: 80kg

Color: Gray RAL 7035

E-number	Part number	Description
2598588	60W-49-47-14-21GY	Eurolan 19" Slimline Wall cabinet 500x140x575, metal door

- BACKBONE / CAMPUS -



CABLE MANAGEMENT

Eurolan wire conductor is 1U and can handle up to 40 pcs C6 UTP cables.

19 "and with 5 jumpers.

Eurolan Finger duct manager comes in 1 and 2U and has a cover in the front.

E-number	Part number	Description
2598583	25B-1U-02BL	Eurolan Wiremanager vertical 1U metal black
2503662	25B-1U-11BL	Eurolan Finger Duct Cable Management with Cover 1U
2503663	25B-2U-11BL	Eurolan Finger Duct Cable Management with Cover 2U

FAN PACKAGE FLOOR CABINET

Specifications

Thermostatic

Complete with internal wires

Easily accessible and maintenance-friendly

Technical information

Electrical connection: 220-240 VAC, 50 / 60Hz, 0.25 A

Fuse: 2.5 A glass fuse

Sound level: 47 dB

Fan capacity: A fan has an air flow of 2.3 m3 / min

Protection: IP20

The thermostat setting range: 0-35C

Surface treatment: Phosphate coating

Color: RAL 7035



Standards

ISO 9001: 2000

CE Certified

RoHS Certified

Meets requirements according to UL and cUL

E-number	Part number	Description
2599283	60A-90-02-07GY	Cooling unit w 2fan+t-stat controlled wall, for universal
2599282	60A-90-04-07GY	Fan T-stat for server

FAN PACKAGE WALL CABINET

Specifications

Switch

Complete with internal wires

Easily accessible and maintenance-friendly

Technical information

Electrical connection: 220-240 VAC, 50 / 60Hz, 0.25 A

Fuse: 2.5 A glass fuse

Sound level: 47 dB

Fan capacity: A fan has an air flow of 2.3 m³ / min

Protection: IP20

The thermostat setting range: 0-35C

Surface treatment: Phosphate coating

Color: RAL 7035

Meets requirements according to UL and cUL

Standards

ISO 9001: 2000

CE Certified

RoHS Certified



E-number	Part number	Description
2598589	60A-90-02-18GY	Eurolan Fan Tray 2-fan for wall cabinet



