



---

**Local Area Network (LAN)  
and Telephony**

page 107



---

**Community Antenna  
TV (CATV), Satellite TV  
and Cable TV**

page 110



---

**Eurolan Home Patch  
Cabinets**

page 111

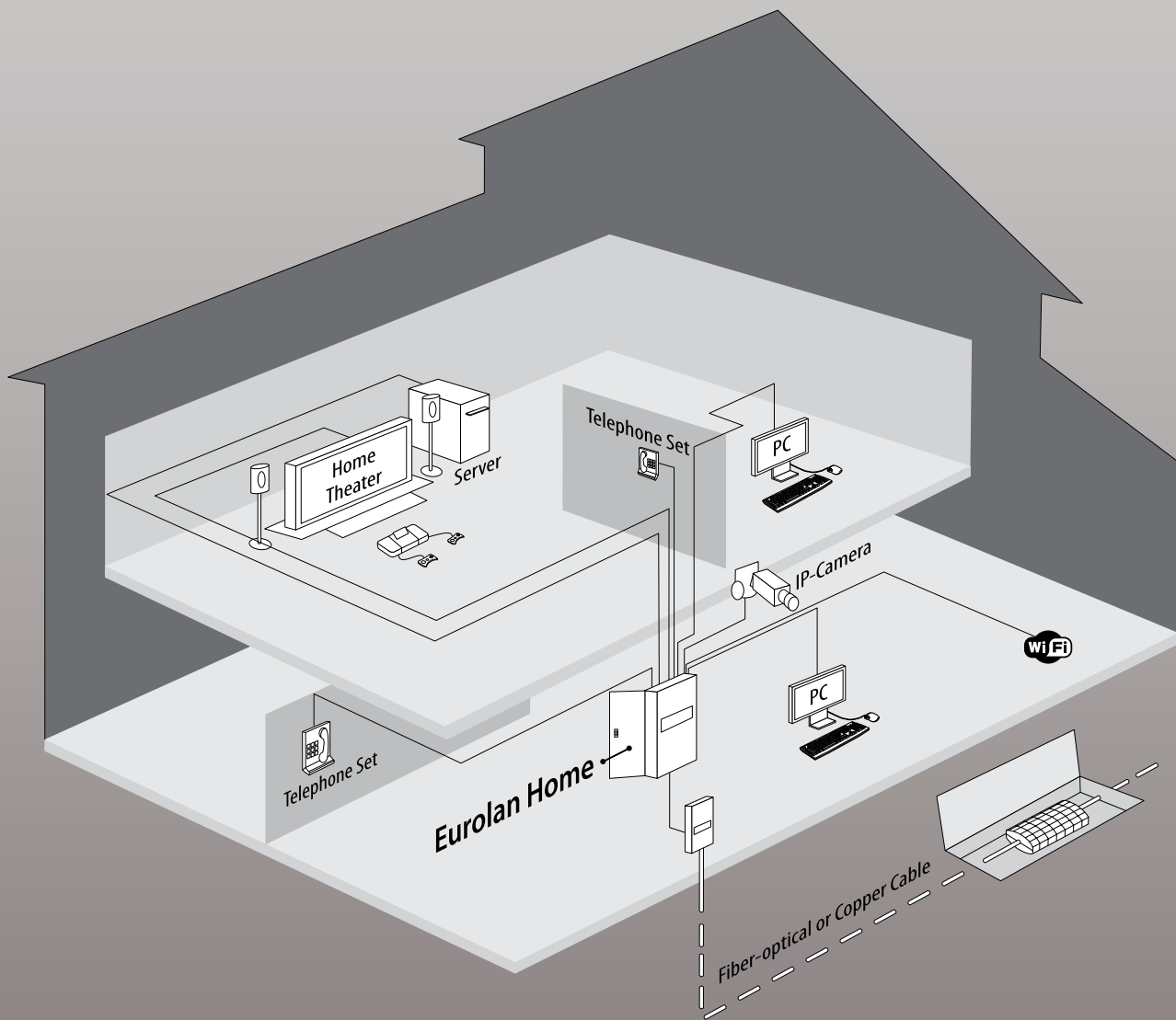


---

**Cables and Outlets**

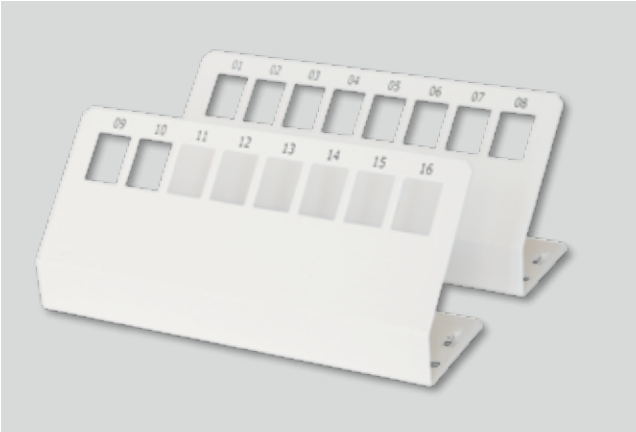
page 114





# Local Area Network (LAN) and Telephony

## Eurolan Home Configurable Patch Panel



50S-SB-23  
50S-SB-24



50S-21-03WT

### Specification

- Number of sockets:  
8  
16
- Mounting dimensions of installed modules Keystone
- Type of installed modules  
Copper cable Cat 5e, 6 and 6<sub>A</sub>  
Fiber-optic single mode and multimode simplex SC with adapter 16B-00-SCWT  
Television
- Front panel colour White
- Marking  
All sockets are numbered  
8-position panels are marked from 1 to 8 and from 9 to 16  
16-position panels are marked from 1 to 16
- Application Create patch panels with any number of ports compatible with Keystone standard
- Installation in Eurolan Home patch cabinets
- Individual packaging in a cardboard box
- Dimensions 165 × 50 × 65 mm

Product Code		Description
1	50S-SB-23	Eurolan Home unloaded patch-panel for 8 Keystones (labeled 1 – 8)
2	50S-SB-24	Eurolan Home unloaded patch-panel for 8 Keystones (labeled 9 – 16)
3	50S-21-03WT	Eurolan Home unloaded patch-panel for 16 Keystones (labeled 1 – 16)

# Local Area Network (LAN) and Telephony

## Eurolan Home Patch Panel Cat 5e UTP 8 × RJ45



50S-11-04BL

### Specification

- Number of pairs: 4 UTP
- Front panel colour Black
- RJ45 modular jack, cat 5e, 8 positions 8-contact
- Number of ports 8 × RJ45
- Cable connecting scheme T568B
- Contact IDC. Cable form from front side
- Number of installed modules IDC 8
- All ports are numbered
- Application  
To build up links and channels for data and other signals transmission in small offices or dwelling rooms  
Support applications with operational speed up to 1 GHz, for example Gigabit Ethernet
- Installation in Eurolan Home patch cabinets
- Individual packaging in a cardboard box
- Dimensions 160 × 76.2 mm

Product Code		Description
1	50S-11-04BL	Patch panel cat 5e UTP 8 × RJ45

# Local Area Network (LAN) and Telephony

## Erolan Home Phone Patch Panel with 8 110 IDC ports



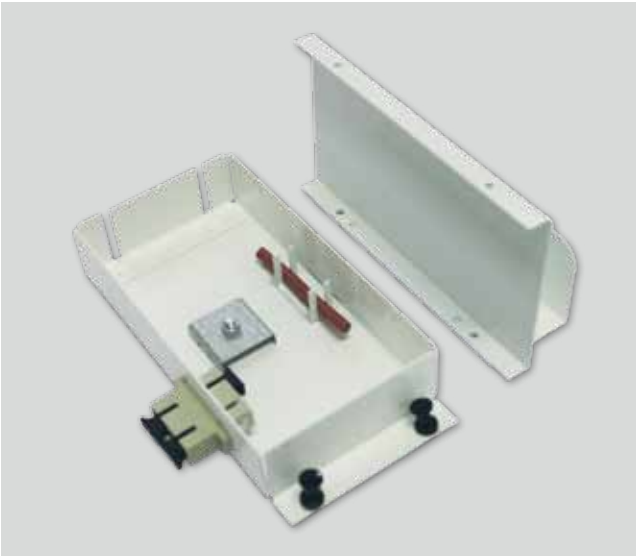
50S-10-02BL

### Specification

- Port number 8 + 1 input + 1 expansion
- Colour Black
- All sockets are numbered on the front side
- Connector type IDC 110
- Support parallel connection of each of 4 input telephone lines to 8 telephone sets
- Installation in Erolan Home patch cabinets
- Individual packaging in a cardboard box
- Dimensions 160 × 50.8 mm

Product Code		Description
1	50S-10-02BL	Phone patch panel with 8 110 IDC ports

## Erolan Home Optical Module with Angled Shelf



50S-SB-25

### Specification

- Number of optical adapters 1 (adapter is supplied separately)
- Adapter type Duplex SC
- Cable strength element termination
- Welded joint holder
- Blown Fiber micro tube holder
- Angled shelf for mini switchboard or mini converter installation
- Installation in Erolan Home patch cabinets
- Erolan Home connection to Erolan Blown Fiber system
- Dimensions 160 × 71 × 60 mm

Product Code		Description
1	50S-SB-25	Erolan Home Optical Module with Angled Shelf

## Community TV, Satellite TV and Cable TV Subsystem

### Eurolan Home Video Splitter



50S-30-02BL

#### Specification

- TV-signal frequency range 5–2300 MHz
- F-connector (plug)
- Application  
Community TV signal connection to some TV-sets (up to 8 sets)  
Depending on signal level video amplifier module may be needed
- Installation in Eurolan Home patch cabinets
- Dimensions 160 × 76.2 mm

Product Code		Description
1	50S-10-11BL	Eurolan Home video splitter, 4 outputs
2	50S-30-02BL	Eurolan Home video splitter, 6 outputs
3	50S-30-01BL	Eurolan Home video splitter, 8 outputs

### Eurolan Home Video amplifier



50S-10-05BL

#### Specification

- TV-signal frequency range 50 – 900 MHz
- Amplification 25 dB
- Outer power supply 12 V, 50 mA
- F-connector (plug)
- Application  
Video signal amplification  
Can be used with other video modules
- Installation in Eurolan Home patch cabinets
- Dimensions 160 × 101.6 mm

Product Code		Description
1	50S-10-05BL	Eurolan Home video amplifier, 1 outputs

### Eurolan Home TV Connector Module



16B-FT-02WT

#### Specification

- Connecting dimensions Keystone
- Connection of terminal TV-equipment to inlet TV-cable
- F-connector (plug)
- TV Exchange cable installation  
F-connector (plug)  
TV socket 9.52 mm (plug)

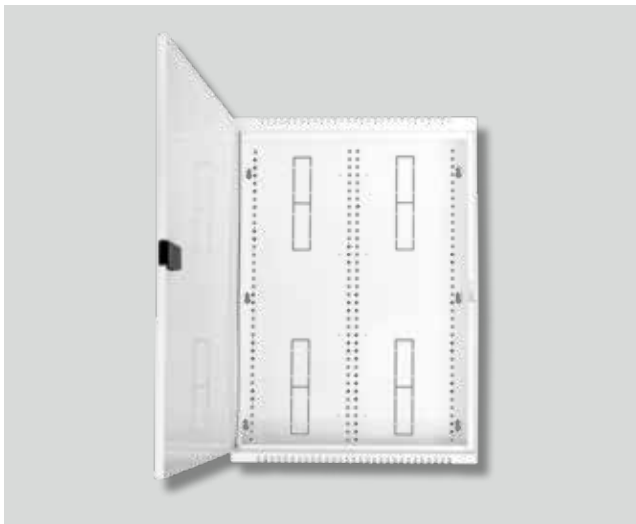
Product Code		Description
1	16B-FT-01WT	F-Type connector module Keystone
2	16B-FT-02WT	Eurolan Home TV F-Type connector module Keystone, 9.52

## Eurolan Home Mounting Cabinets

### Eurolan Home Wall Mount Cabinets



50S-21-20WT



50S-22-28WT

#### Specification

- Cabinet height  
508 mm (20")  
711 mm (28")
- Width 365 mm (without detachable frame)
- Depth  
94 mm – cabinet  
100 mm – by brackets
- Mounting  
To brackets at the rear panel (6 holes for 20" cabinet, 8 holes for 28" cabinet)  
It can be mounted into niche with width 365 mm with the help of patch frame supplied in the kit
- Detachable metal door
- Door hinge 120°  
Door is locked by latch
- Cabinet case material 1.5 mm steel sheet
- Equipment is installed on mounting holes in the cabinet rear panel
- Cable input  
4 inputs 150 × 30 mm at the rear panel  
1 input 300 × 30 mm at top  
1 input 300 × 30 mm at bottom  
Cable inputs are protected with detachable plugs 70 × 24 mm
- Electric sockets are installed on mounting holes in the cabinet rear panel
- Application  
To mount active and passive Eurolan Home network equipment and other equipment of the same dimensions  
Cabinet operation is possible both in offices and dwellings

Product Code		Description
1	50S-22-20WT	Eurolan Home wall mount cabinet 20" with a door
2	50S-22-28WT	Eurolan Home wall mount cabinet 28" with a door

### Eurolan Home Angled Shelf



50S-21-05WT

#### Specification

- Angled shelf  
To mount mini switchboard and mini converter  
It is mounted with the help of Velcro tape 70V-20-01BU
- Mounting  
Installation in Eurolan Home patch cabinets  
Mounting holes are in the cabinet rear panel
- Dimensions 160 × 71 × 60 mm

Product Code		Description
1	50S-21-05WT	Eurolan Home angled shelf



## Eurolan Home Patch Cabinets

### Eurolan Home Cable Organiser



50S-21-02WT

#### Specification

- Installation in Eurolan Home patch cabinets mounting holes are in the cabinet rear panel
- Application: to keep banded cables with plastic cable strips of up to 5 mm width
- Dimensions 164 × 34 × 6 mm

Product Code		Description
1	50S-21-02WT	Eurolan Home cable organiser

### Tape Velcro



70V-20-01BU

#### Specification

- Length 1600 mm, it is possible to cut to specified length
- Width 20.2 mm
- Application  
To organise cables  
Ideal for applications requiring frequent additions and changes  
Velcro tape advantage is its possibility to be used multiple times  
The material provides long-term durability
- Functions  
Protects copper and optic-fiber cables against excessive tension  
Does not kink the cable  
Easy use and safe mounting without sharp edges
- Material nylon
- Colour Blue RAL 5005 (Eurolan Blue)
- Delivery packaging in an individual plastic bag

Product Code		Description
1	70V-20-01BU	Eurolan Velcro tape, 1600 × 20.2 mm, blue

### Eurolan Home Lock Plug



50S-21-07WT

To mount equipment in Eurolan Home patch cabinets

Product Code		Description
1	50S-21-07WT	Eurolan Home Lock plug 10 pcs packaging

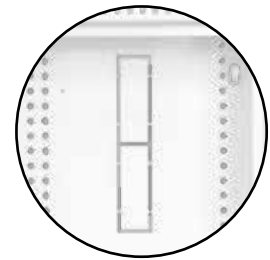
## Eurolan Home Wall Mount Cabinet



Door can be hinged for left or right opening

Mounting holes for Eurolan Home equipment

Strong load bearing structure of the cabinet frame



Easy-to-use cable entry on 3 sides



Holes to hang the cabinet on the wall with the help of screws and concrete inserts



Ventilation openings provide sufficient ventilation



Installation on wall or into niche with width 365 mm

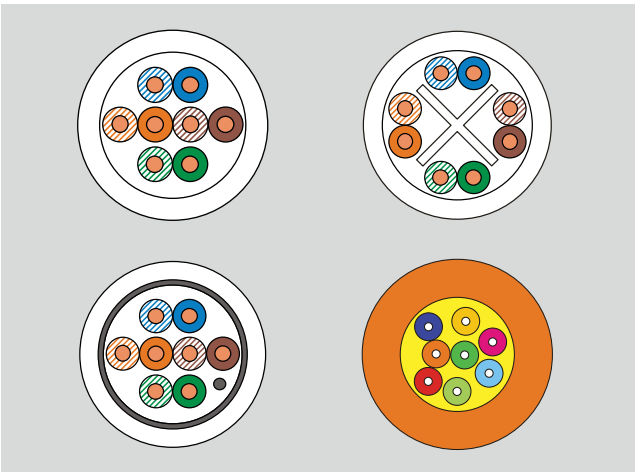
Simple latch secures door in closed position



Clips for quick and easy mounting of equipment in the cabinet

## Cables and Outlets

### Eurolan Home Cables



Cables and outlets described in sections Eurolan Copper and Eurolan Optic are used in Eurolan Home.

### Eurolan Home Power Outlet

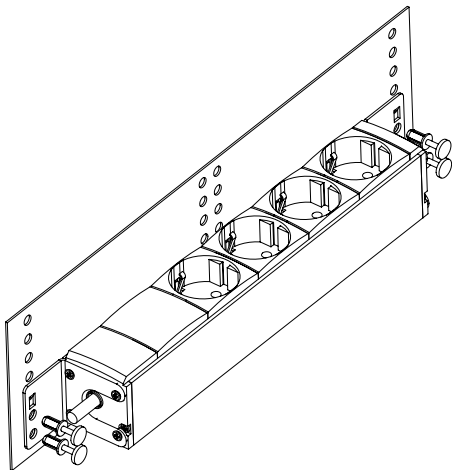


50S-21-11WT

#### Specification

- Installation in Eurolan Home patch cabinets mounting holes in the cabinet rear wall
- To connect power supply cords of the active equipment installed in the cabinet
- Outlet standard 4 × Schuko 220 V 10/16 A
- Connection with outer power cord (not in the kit)
- Dimensions: 164 × 95 × 65 mm

Product Code		Description
1	50S-21-11WT	Eurolan Home power outlet 4 × Schuko 220 V 10/16 A
2	50S-21-15GY	Eurolan Home horizontal power outlet 4 × Schuko 220 B 10/16 A



50S-21-15GY

# Cables and Outlets

## Wall Mount Boxes



12B-00-01WT



12B-00-02WT



12B-00-04WT



12B-00-06WT

### Specification

- Colour White
- Mounting on wall, set includes mounting elements
- Type of installed module Keystone
- Cable entry from 3 sides and through box base, cable fastening inside box without clamps
- Individual packaging in plastic sleeve

### Dimensions, mm

Product Code		12B-00-01WT	12B-00-02WT	12B-00-04WT	12B-00-06WT
1	Width, mm	38	62	114	168
2	Height, mm	25	25	26	35
3	Depth, mm	58	58	70	108

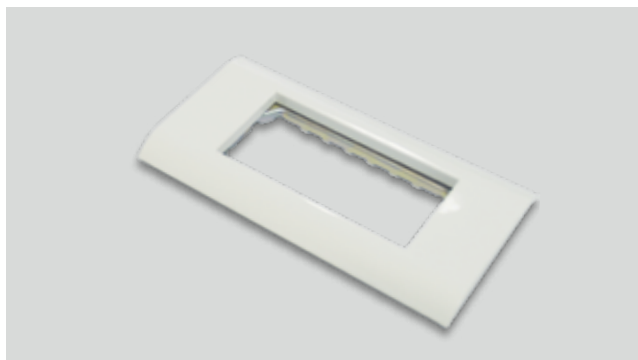
Product Code		Description
1	12B-00-01WT	Eurolan wall box, 1 port
2	12B-00-02WT	Eurolan wall box, 2 port
3	12B-00-04WT	Eurolan wall box, 4 port
4	12B-00-06WT	Eurolan wall box, 6 port

## Cables and Outlets

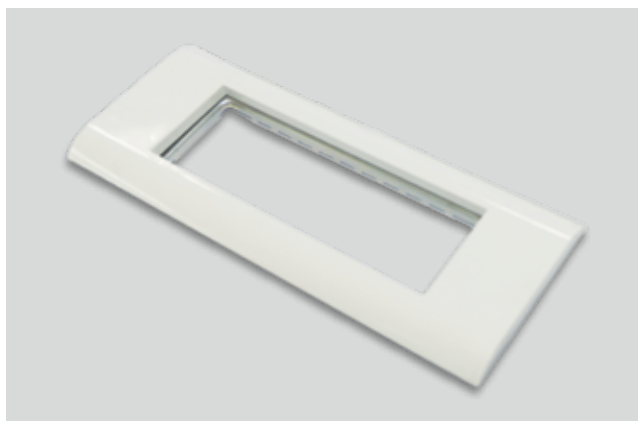
### Frames Series 45



16M-00-02WT



16M-00-04WT



16M-00-06WT

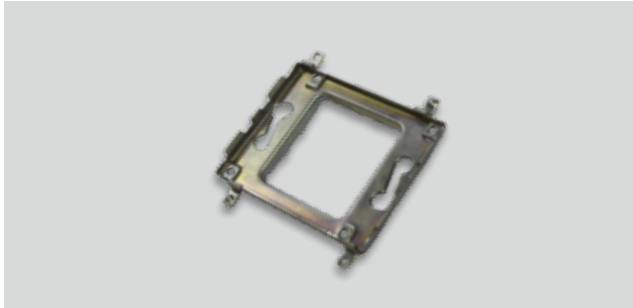
#### Specification

- Colour white RAL 9010, matches Legrand Mosaic frames, frames in different colours are available
- Compatible with all Eurolan Mosaic frames
- Compatible with appliance receptacles, switches, dimmers of Mosaic and other manufacturers
- Mounting in supports Series 16S-00-0xWT with fixing screws
- Application  
Using with supports 16S-00-0XXWT  
Mounting in junction boxes with distance between axes = 60 mm
- Packaging in a plastic bag

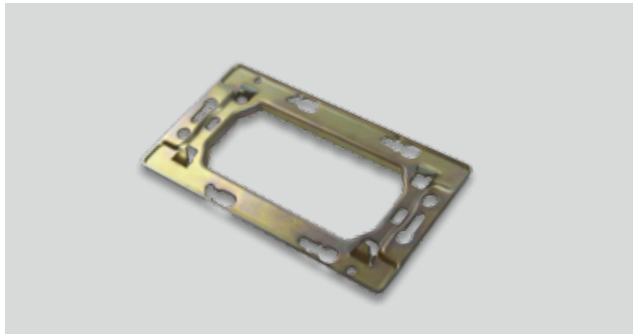
Product Code		Description
1	16M-00-02WT	Eurolan frame for modules 22.5 × 45.0 mm, 2 modules, white
2	16M-00-04WT	Eurolan frame for modules 22.5 × 45.0 mm, 4 modules, white
3	16M-00-06WT	Eurolan frame for modules 22.5 × 45.0 mm, 6 modules, white

## Cables and Outlets

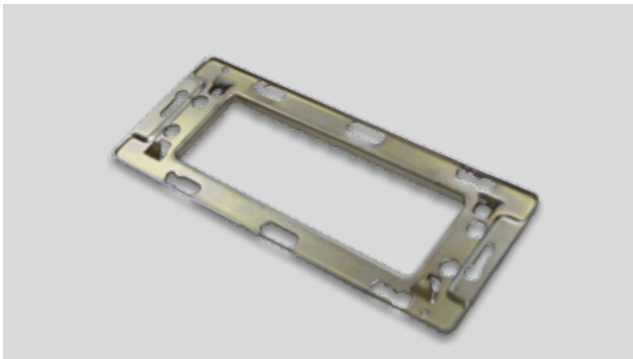
### Supports for Frames Series 45



16S-00-02WT



16S-00-04WT



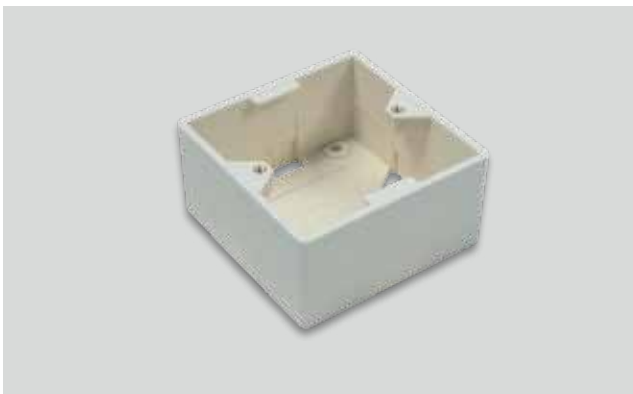
16S-00-06WT

#### Specification

- Material: steel
- Fixing by screws
- Application  
Using with supports 16M-00-0XXWT  
Mounting in junction boxes with distance between axes = 60 mm
- Packaging in a plastic bag

Product Code		Description
1	16S-00-02WT	Eurolan support for modules 22.5 × 45.0 mm, 2 modules, white
2	16S-00-04WT	Eurolan support for modules 22.5 × 45.0 mm, 4 modules, white
3	16S-00-06WT	Eurolan support for modules 22.5 × 45.0 mm, 6 modules, white

### Wall Boxes for Frames Series 45



12A-00-02WT

#### Specification

- Colour white RAL 9010
- Distance between axes = 60 mm
- Mounting on a wall
- Application  
To mount frames Series 45 – 16M-00-02WT in combination with 16S-00-02WT support  
To mount frames 80 × 90 mm with distance manufacturers
- Cable entry from 4 sides and through box base
- Individual packaging
- Dimensions Width × Height × Depth,  
80 × 80 × 40 mm

Product Code		Description
1	12A-00-02WT	Eurolan wall box for frames Series 45